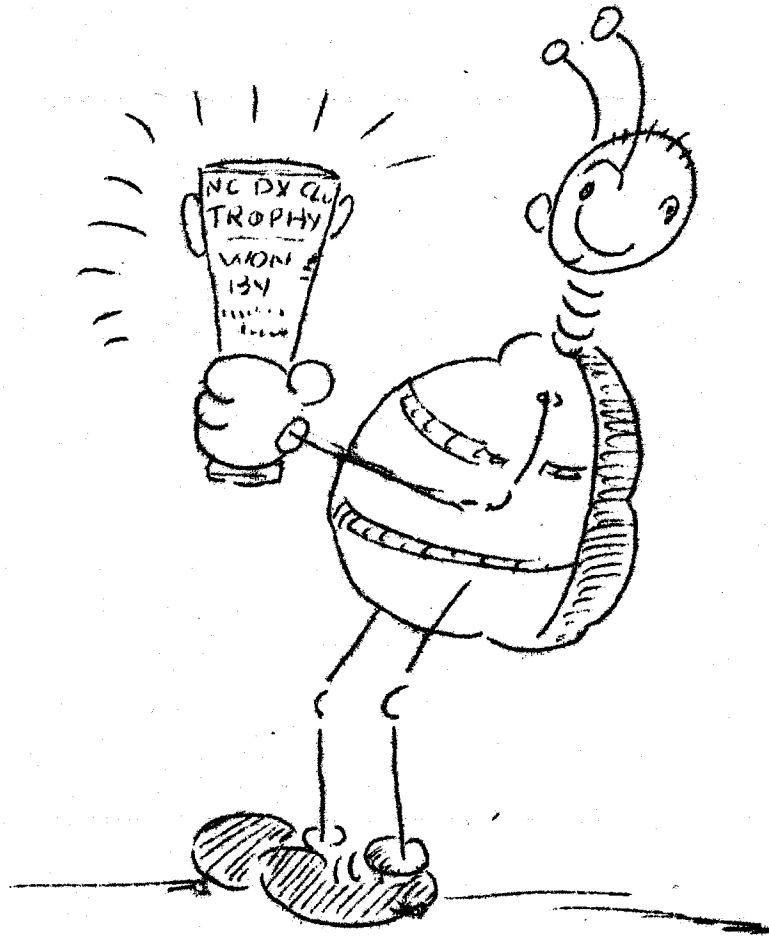


THE MARCH-1949 DX'ER



NORTHERN CALIFORNIA
DX CLUB INC. OAKLAND, CAL.
- POST BOX 75 -

=====

T H E D X ' E R

=====

NORTHERN CALIFORNIA DX CLUB INC
FOUNDED 1946
POSTOFFICE BOX 75, OAKLAND, CALIFORNIA

=====

PRES. W6WB
VP-W6UZX
SEC/TREAS-W6TI

PUBLISHED MONTHLY FOR THE BENEFIT
AND INTEREST OF ALL MEMBERS.

BOARD OF
DIRECTORS:
W6RM
W6RBQ

=====

PERMISSION TO REPRODUCE ANY OR ALL PARTS OF
THE DX'ER IS ALLOWED PROVIDED FULL CREDIT
IS GIVEN THE DX'ER.

=====

M A R C H 1 9 4 9

Issue 3..Vol. 2

=====

As we sit here wondering just what to gripe about this month the second half of the phone contest is going full blast. And what a rat race this one really is. We always thought that the CW portion of the contest could be a rugged affair but this Phone business is really something to hear. The old 'S' meter on the receiver stays at a constant S9 throughout the whole U.S. portion of the phone band.

Not to detract at all from the CW part of the contest which for outright participation this year surely must have topped all previous years. During certain times on 10 and 20 the European stations were barelling through hours at a stretch.

But again this year, as we have noted in the previous contests since the war, the East Coast stations again seemed to hold the edge on all directions. Surely we, on the West Coast do not have much difficulty in contacting KH6 and KL7 and JA stations on 3.5 m.c. Just imagine the situation in the East with all those European countries which are as close or closer than the above mentioned directions which we are able to contact on 3.5 m.c. with ease. What a bunch of multipliers and contacts are possible on the East Coast. The number of European contacts which we were able to chalk up here in our area were nil if any.

It seems to us that now is the time for the League and everyone else interested to start working on the 1950 DX contest. We are not offering a cure for some of the evils which now exist and which is fast making the contest an East Coast affair but just calling it to your attention. Now when we mention the ARRL contest as fast becoming 'an East Coast Affair' we mean that the high U.S.A. contestant scorer, under the present setup, will never come from the West Coast. Oh sure, the League might argue that we are all competing on a Sectional basis but if the League were at all interested in helping the West Coast to compete on a National basis then something must be done for the 1950 Contest. It is a little discouraging year after year to see the astronomical scores come forth from the East with the West Coast, due to it's geographical location continually play second fiddle.

In all fairness we would like the opportunity to be able to compete Nationally. Give us additional countries to add or do away with 80 for the contest but at least, GIVE US A CHANCE! W6PB

Important Notice Important

Our APRIL meeting will be back to normal after the DX contests, to the second Thursday of the month. The APRIL meeting will be on THURSDAY April 14th.

SP5BA mebbe a PHONEY?

We sincerely hope not but he said to QSL via W5KC. A note from 5KC states that he doesn't know SP5BA and is holding the cards from all the gang pending further advice from SP5BA.

W6UZX in talking to one of his PAØ pals mentioned the SP5 and was told that they are suspicious as each European the SP5 worked he gave a different QSL QTH.

However, due to the strength of the Iron Curtain the guy is no doubt very much undercover and we are all hoping that some one of these days the cards will wander through.

More on PHONIES.

From CQ Magazine we are printing a list of calls which are now considered a phoney as no cards have come thru and it has been a long time. Some of the calls as shown are phonies and in a couple of cases have been apprehended by the FCC.

AC2MA	LX1ES	SP1F	UM8DG
AC3GG	LX1FR	SP1AR	VQ1RK
CR8AC	LX1HW	SP1BA	VQ6BZ
EA7A	LX1TS	SP1KK	VQ9AA
ES1TU	LX2EN	SP1KL	VQ9AC
ET1JJ	LX2EF	SP1KWK	VR4BU
FB3AC	LZ1K	SP1MA	VS5A
FB8AC	LZ1BG	SP1PP	VS9AE
FB8AJ	LZ1CJ	SP2KL	VS9AU
FB8FT	OY5AA	SP2RD	YA1A
FF8Z	PX1B	SP3AA	YA2B
FG3BK	PX1C	SP3KO	YA2AB
FG8A	PX1D	SP3TX	YA3A
FG8D	PX1E	SP5X	YA3B
FK8AN	PX1O	SP5Z	YI7BZ
FL8AE	PX1V	SP5TU	ZA2A
FL8AM	PX1Z	Su1X	ZA2D
FP8A	PX1AA	SU2IB	ZA2F
FP8AA	PX2A	TA1B	ZA2X
FP8QN	PX2B	TA1C	ZA7AA
FR8AE	PX2F	TA1AB	ZD1WB
HZ2Z	PX2AB	TA1AD	ZD3AC
HZ2J	PX2CX	TA3M	
LX1BW	PX2LD	TA6AC	
LX1EN	PX4AA	TA6ST	
LX1ER	SO3IF	UA2BU/UP2	

Some info on ZD1Q of interest

From W6MX we have the follow-info: Walt heard from G2MI and so far the ZD hasn't as yet sent out any QSL cards so we still all have hope.

FG8N- ? ? ? ?

Is he is or is he ain't? a goody or a bady?

Only time will tell but when he said to QSL via W4JID and when we found that JID was the SeaScout rig we got just a little bit skeptical.

However strange things still do happen so mebbe he will prove OK.

ON THESE PHONEY STATIONS.

We perhaps should call this the DX'ers "PHONEY-PAGE" but it seems that there are too many of these stations on the air at the present time. It is very discouraging to work what you might considera rare one only to find that it was a phoney.

If any of the gang should hear a character calling and signing EZ4BB, don't waste your time. He claims to be in the French Zone of Germany and even if he is good will not count for anything like a new one as it is still Germany. If we refused to work these jokers it might help clear the air of these characters

DX CONTEST ARRL 1949

Say Gang.....DON'T FORGET TO CREDIT THE NCDX CLUB ON YOUR Score also bring in your score so that TI may send it in also for the club credit. If you cannot possibly make the meeting, give the score to a pal to bring in or please phone Horace with the dope.

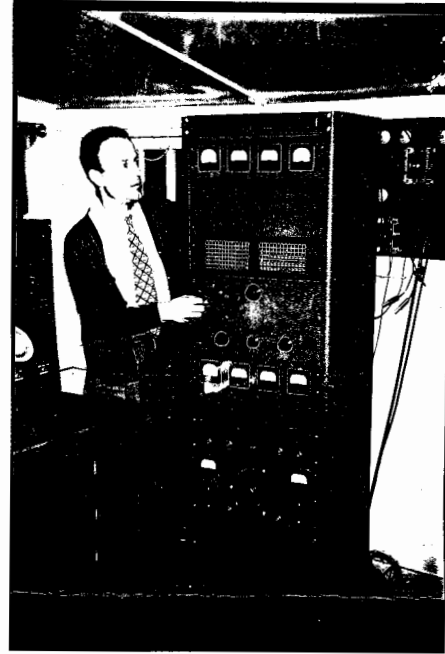
Just in case you don't remember Horace's number here it is:

Glencourt 1-2792.

Didja hear about the gal that got a new refrigerator and the second day she had it she found a live rabbit in it?"Whatcha doing here?" she said. "Isn't this a Westinghouse asked the bunny. "Yes" said the gal. "Well then", said the rabbit, its Okay, cause I'm just Westing".



W6DUB - WALNUT CREEK - CAL.



{The O.M. Himself, W6DUB.}
{Getting that last oomph}

The nice rig shown above is that of Mario Chirone, W6DUB and the other half of the Electric Supply Company, Oakland California.

The pictures are very clear and self-explanatory as you can see the Colling 75-A receiver and above that the Collins 32V exciter. Two Gordon Direction Indicators are for the 10 and 20 meter antennas. The transmitter runs a KW and ends up with a pair of 4-250A tubes.

Neatness and accessibility seem to be the keynote at W6DUB and when Mario gets a little more time to devote to DX he should be able to give a good account of himself as regards DX. However, despite the press of business which has kept DUB very busy he has been able to garner the 100 cards for DXCC.

NEW PREFIXES

The following are now in use:

- DL5-French Zone of Germany
- DL4-U.S. " " "
- DL2-British " " "
- MF2-British Trieste
- HL1AA-HL1ZZ- Korea
- JA2-JA7- Japan
- KX6AA-KX6ZZ-Marshall Islands
- KR6AA-KR6ZZ-Ryukyus Islands
- KC6AA-KC6ZZ-Jaroline Islands
- KG6TA-KG6TZ-Tinian
- KG6SA-KG6SZ-Saipan
- KG6IA-KG6IZ-Iwo Jima
- KZ5AA-KZ5WZ-Canal Zone.

20 Meter DX at the present time.

Seems pretty spotty with the a.m. a little bit the better. However we have evenings when the signals from Europe really bang in.

Asia seems good again with AC4RF having been contacted by several of the club members in the last few mornings.

Some Rat Race Dope from OMC

Clay has sent us the following info on some nice DX.

- VQ8CB- 14009- 7.30 a.m.
- ZC4AC 14000 to 030-11.00 p.m.
- PX1A-14018-T7- 11.30 p.m.
- ZD8B-14020- 11.30 p.m. (this guy gets on at 11.30 p.m. exactly and quits almost evrytime at 12.15 a.m. to go to breakfast) Editor.
- MD4BPC-14012-T7- 7.30 a.m.
- AC4RF-14022-7.30 a.m.
- VU7AF-14020-7.45 a.m.
- OY3G-14101-11.00 p.m.
- UJ8KAA-14035-7.30 a.m.

Due to lack of information from the members and also to the strain of the DX contest, this issue of the DX'er is naturally a little smaller than usual. However, next month we should have more info including another SWAP column.

NORTHERN CALIFORNIA DX CLUB INC--ROSTER POSTWAR COUNTRIES WORKED.

CALL	CW/PHONE	PHONE	ZONES	DXCC	WAZ	REMARKS
W6AM	184	90	40	X	X	
W6AED		120	37			
W6AJF						Hon. Member
W6ATO	100	100	38			
W6BUY	106		37	X		
W6CTL	126		39	X		
W6CIS	161			X		
W6DUB	123		40	X		
W6DZZ	168		40	X	X	
W6EJA	83		37			
W6GIZ	91		32			
W6IDY		142				
W6ITH						
W6IKQ		123	33	X		Prewar DXCC
W6JK	119		39			
W6KEK	105		39			
W6LDD	131		40	X		
W6LMZ	89		36			
W6MEK	194		40	X	X	
W6MVQ	186		40	X	X	
W6MHB	108 (108)		38			
W6MLY	153		40	X	X	
W6MX	199		40	X	X	
W6NZ	93		38			
W6OMC	180		40	X	X	
W6PWR	8	92 (92)	32			
W6PB	180		40	X	X	
W6QDE	71		36			
W6QLH						
W6RM	184		40	X	X	
W6RRG	80		39			
W6RBQ	186		40	X	X	
W6RCC	93		37			
W6SQ						
W6SR	129		39			
W6TI	154		40	X	X	
W6TT	190	108	40	X	X	
W6UPV		71	23			
W6UZX	154		40	X	X	
W6WB	180		40	X		
W6YI		54	28			
W6ZCY	199		40	X	X	
W6ZUI	107		38			
W7HXG	120		34			

The above shows a healthy increase on most of the members. If there are any mistakes please excuse your ed as we are still rocky a little from the CW contest.

Of the total members participating in DX at the present time we show the following statistics:

<u>Number of members</u>	<u>No. of DXCC</u>	<u>No. of WAZ</u>
41	21	14

Not a bad showing at all!!!!!!