

NORTHERN
CALIFORNIA
DIX CLUB

POSTOFFICE BOX 75
OAKLAND - CALIFORNIA

INC.

The DX'er
NORTHERN CALIFORNIA DX CLUB INCORPORATED-BOX 75-OAKLAND, CALIFORNIA
FOUNDED 1946.

PUBLISHED MONTHLY FOR THE INTEREST AND BENEFIT OF ALL THE MEMBERS

Pre. W6OMC	Board Directors
VP-W6SC	W6RM
Sec/Treas. W6TI	W6RBQ

Permission to reproduce any or all parts of the DX'er is allowed
6 provided full credit is given the DX'er.

O C T O B E R 1949 Iss. 10 vol 2

Hard as we try many of us sometimes get into an operating rut and many of our contacts seem to carry on with more or less of a 'formula', however, this 'formula' type operating is a little difficult to avoid when trying to work DX and get through so that the next man in line may also be able to get in a contact. There is, however a noted tendency lately for some of us to be working a rare one and after receiving our report to end up something like this: 'Well 6.m., there are many others waiting to contact you so will not hold you at this time, QRU?', Best of luck es DX and hope to hear you again soon, 73, QRU here, good hunting, sk etc., and etc.

Now it seems to us when one is sitting in on a DX deal as above, getting the fidgets as the clock rolls by and the DX is getting weaker by the minute that all that hogwash to the effect 'many others are waiting so won't hold you o.b' could very well be left out. Certainly the DX station knows that 'many are waiting' as his ears have probably been ringing for the past 15 minutes with all the buzz saw jargon which he had to listen through in order to get your call and doesn't need to be reminded that 'others are waiting'. And, it just takes up needless time on the air so that when about three stations in a row go through the above rigamarole, there could have been time for the DX station to contact several additional stations. So, lets try and get through with the rare ones and let the other fellow have a chance at some of this DX.

Changing the subject for a moment and being well in advance of the next ARRL DX Contest, and having seen all the various recommendations put forth to try and equalize the West coast with the East coast, we offer this simple idea. Its a DX Contest isn't it? Well lets confine the DX contest to the DX bands, that is the general DX bands as used by all the USA for DX. Namely 10, 20 and 40 meters. Lets not count 11 as a separate band and lets forget this 80 meter business. Sure, the East Coast is able to get lots of multipliers on 80 in Europe but here on the West, we have very few. And 80 IS NOT strictly a DX band. Lets use those bands which we use for DX and then have it a real DX Contest.

W6PB- Editor.

PHONE info fm PWR:

Dick sent in the following info which should be appreciated by the gang:

VQ8AF--14180--a.m. abt 7.00
UA3AM-14140-12 midnite
CR5UP-Low end-a.m.'s
ZS8A-14035-a.m.s
VK1RA-14305 (Heard Island)
ZK2AA-9 pm on 14360
EK1AD-14190

VP9WW says will QSL so if you need that on phone go after him.

Also PJ5RX on 14340 with a rough carrier comes through in the evenings.

PACIFIC DIVISION CONVENTION.

DX meetings will also be a feature of this convention to be held at Reno, Nevada and should prove of interest to the gang if you get a chance to get there.

THE DATES:

OCTOBER 29 and 30th.

BC221 A Freq. Meter.

First \$37.50 takes. In very excellent condition... See W6PB.

LU2ZA-Orkneys.

Same dope as on LU1ZA-The League is not counting altho' the guy is on the South Orkneys but being an Argentinian and not a Britisher, the league won't count. Now heres an idea(Charley ole Boy should like this one too).. We recommend that the League count TWO countries. Namely: Argentina Orkneys and British Orkneys...

AR8AB

This station has been heard on the East Coast operating on Ten meter phone which may be a tip-off to some of the gang who have not contacted AR8, what with 28 mcs cond-dx improving in this area. His frequency: 28340 kcs.

SV7AA-KIOS Isle.

This time Jules was successful in making the trip and contacted a few of the Club Members. However, we are not positive that this will count a new one but pretty sure.

CYPRUS

On phone are two new ones from this area, namely: MD7WE and also MD7NU. If any of the phone boys hear these on 20 phone please contact your ed. giving time and frequencies so that all may be able to benefit.

ZS7C-Swaziland.

May still be heard and contacted around 7 am PST on the frequency 14145 if you can dig him out of VE and JA phones.

b PICKWAN is his name and he requests that we send about 6 wpm evenly as his code speed is still not up to par. He will QSL 100%.

MD7DC-Cyprus.

Requests QSL via RSGB and not direct. He claims will answer all QSL cards.

From Jim Moore and the UNIVERSALITE

The following phone info:

ARSAB-14400-	at 0045
CN8EQ-14395-	2145
CN8EI-14308-	0155
CR5UP-14146-	1022
CR9AG-14345-	1100
EA4ZL-14158-	0117
EA1FO-14344-	0131
EABAO-14318-	0113
EA9AI-14405-	0139
EK1AD-14152-	0205
FQ8SN-14399-	0152
F9QU-14348-	at 0015 operating as F9QU/FM8.

There are some good ones in the above list and should be well worth going after.

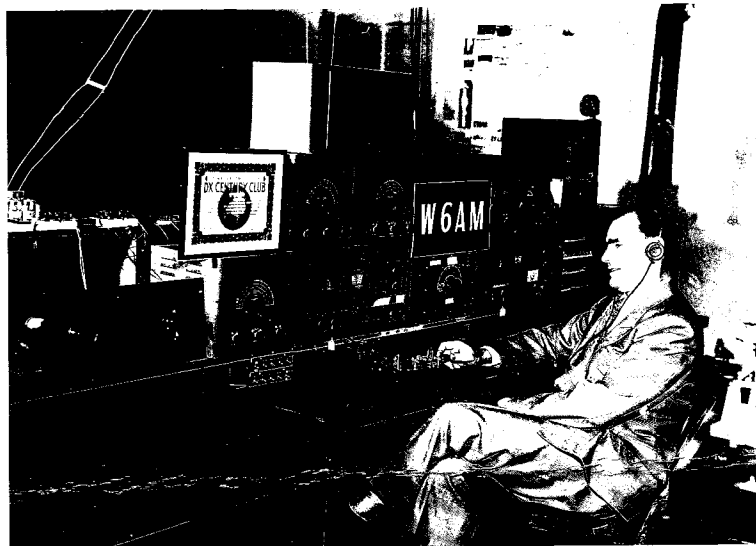
COND. DX. 14 mcs.

Have been in and out with the band sometimes doing a nose dive around 9 p.m. and the early a.m. being the best. However the predictions look for ten to start in to open up with poor 20 meter evening openings for the next couple of months so it would seem that now would be the time to get that rebuilding out of the way in preparation for the ARRL DX contest as well as the CQ test.

For the DX'er!!!!

WE ARE AGAIN OUT OF PHOTOS.!!!!

W
G
A
M



207
L
L
HILLS
CALIF.

One of the members of the NCDX Club that needs no introduction is the station with the call W6AM, Don Wallace. Being a real old timer is just one of the reasons for everyone knowing Don. Every chance that Don gets to meet new DX'ers on his many trips around the country are utilized and after working hours Don likes nothing better than to hole up at some Ham shack and talk DX into the wee hours.

A brief description of the layout pictured above follows: On the left are the two antenna tuning networks for receiving only. The extreme left houses the 40/80 meter job and the right side the 10, 15, 20 and 40 meter tuner. Next is the HF10/20 which is fed by the upper left RME DB22A. The output of the HF 10-20 feeds the other DB-22-A at 7 mc then into the RME-45. The RME 45 feeds the McMurdo Silver 805, 100 KC IF Amplifier which has 8 stages at 100 KC 4 of which are bandpass. The 805 is in back of the 805 RME45.

Next in view is the Surplus Meissner Signal Shifter and another RME-45 fed with a DB-20 for the use of Ham visitors.

There is also a Crystal Oscillator with two Xtal positions for spotting band edges which is located on top of the RME-45.

The oil stove and stove pipe were almost hidden by Don as he is an ardent Southern California WX booster but it still shows through in the rear of the photo-HI.

That Super DeLuxe Gold Plated Vibroplex was the code receiving prize at the last pre-war S.W. Div. Convention and Don claims it is the berries for raising the hard to get DX.

Most of the DX is done at the ranch which is 120 acres and is 1200' high. There is located 10 reversible direction rhombics a single Vee beam a ten element Sterba aimed in the general direction of EA6 in the Balearics. The 24 contact rotary switch next to the Bug runs the direction switching relays.

There are a couple of extra cots at the ranch and Don invites any of the gang from the NCDX Club who are down that way, to come spend a Saturday night chasing DX.

Pacific Division Director.

With the announcement of the candidacy of one of our own Club members, in the person Of Ken Hughes, W6CIS it behooves each and every member of the club to get in back of Ken and see that he is elected. We want another DX man to represent us at the league and Ken is just the man to do it for us. Being very close to Bill Ladley, W6RBQ, we know that Ken will be able to get plenty of information from Bill on various and sundry procedures pertaining to the job of Director and we know that Bill will be of inestimable help. SOOOOOO, when you get your ballot mark a big fat X after W6CIS, and, in addition: GET ALL THE REST OF THE W6 HAMS IN YOUR AREA TO DO THE SAME. TNX.

FG8 and FM 8!!!!

Keep on the lookout for VP1AC who is going to try and operate from the above locations. He will use a BC610 and should pack a wallop.

HI8WF.

Has been off the air on a visit to the States but should be back on the air this month. This is on 28 mc phone and the frequency is: 28400 kcs.

F9QM/FM8, Martinique.

If you wrer fortunate to raise him the QTH is as follows:

John Bernicot,
Companie Genera'l Trans-
Atlantic,
Fort-de-France,
MARTINIQUE, F.W.I.

He is supposed to QSL.

VP5XX

Now legal signing VP5BF in the same place and may be on 7295 kcs. Try a hookup with KV4AA and get set for a contact.

ZD3D, GAMBIA.

QSL to Box 285, Gambia.

W6ODD/DX soon to be just another W.

From a letter to W6TI we learn that Willard Hunton, who gave many of the gang a new one in F18 land and CR8 land will no longer be a rare DXer. He will soon be signing W3AG which was his old call and will settle down to being just another W.

John's letter thanked Horace for all the help in handling the W6 cards for W6ODD/DX and so it is with deep regret that we cannot chase W6ODD at any more rare countries. We sorta had the hopes that we could work W6ODD/AC3.

Some QTH of interest:

VP8AO, Ralph Lenton,
34 Lynwood,
Luton Beds, England.
KP4QZ, Box 3036,
Santurce, Puerto Rico.

PJ5JR-QSL via W4BYF.

4X4CR-Box 4099, Tel Aviv, Israel.

E48RB, Box 12, La Laguna, Tenerife
Canary Islands.

TA3FAS, c/o W5HBQ

PZ1QM, PO BOX 679, Paramaribo,
Surinam.

CX3CS, Box 122, Montivideo,
Uruguay.

From OMC some Dope:

LZ1ID-14032 T8----p.m.
ZD2P 14038 T7 p.m. and a
CR10AA 14026 T9 12.30am
VK1RA 14025 T8 3 am
SVØWH 14050 T8 am
FY8UD 14069 T9 .9pm
PJ5TR 14051 T8 7 pm
MD2GO 14018 T8 8pm
UR2AA 14034 T9 9pm
ZD9AA 14042 8/9 am
VP8AK 14050 T8 6/7 pm

NOWS THE TIME!!!

To start thinking about the ARRL DX Contest. Lets get the Xtal 100 KC bars in readiness so we can all stay in the band.

PROPAGATION CONDITIONS FOR OCTOBER, and Review of September Condx.

This month we again received advance data on direct path conditions for October, thanks to Perry Forrell, and SCIENTIFIC OBSERVATIONS, of Philadelphia.

S.F. to: Mcs: Band Openings and Times in PST:

Europe:	7	1800 to 2100. High Noise levels.
	14	Erratic short from 0530 to 0615. Main opening from 1000 to 1415.
	28	Erratic. Good less than 50% of the month. 0745 to 1000 (Present indications are that it will be open much later than 1000-W6UZ X)
South Africa:	7	1630 to 1945. Peak from 1730 to 1945.
	14	1500 to 2245. Peak from 1730 to 2030.
	28	May open as early as 0600. Better from 0900 to 1630. (They probably hit the sack on or before 1400 00). Peak from 1230 to 1630.
South East Asia:	7	0115 to 0845, but peak from 0300 to 0630.
	14	XXXXXXXXXXXX . Possible opening 0000 to 0130. Erratic from 0200 to 0500. Re-opens 0730 to 1230, with peak 0730 to 0800.
	28.	Some sigs 0900 0930. (Also watch long path a bit earlier!) Major opening 1445 1915.
Australasia:	7	2330 to 0730. with peak from 0300 0530.
	14	Strong opening just before 0930, with second opening 2100 to 0315. Peak 0000 to 0315.
	28	1000 to 2100. Band may drop during afternoons but rebuilds 1800 to 2045, which is peak.
South America:	7	1630 to 0300. Peak from 1900 to 0130.
	14	1415 to 0600, with phone from 1515 on. Peak is from 1800 to 0300.
	28	0615 to 1715. Peak from 1500 to 1700.

SEPTEMBER REVIEW: Much good DX has been heard, and worked during September, but 20 took quite a nosedive during the last week. Prior to this, there were some excellent openings during the evenings to Europe, sometimes permitting phone QSOs until 0130! Even during the last week, European sigs were excellent from as early as 0900 on the short path) up till around sundown if no evening opening followed. Before 0900 there were many good long path openings to both Europe and the Middle East, some of which started as early as 0500. FN8AD on CW was heard up till 1030 on many days, XZ, VU, and VS7 also heard. Early in the month some excellent phone QSOs were possible with XZ and VU up till 0930. CR5UPs fine phone signals the long way around were a pleasure to copy in the mornings around 0700 to 0830. Watch this path, and direction carefully during October also.

The first decent openings to Europe on 28 Mcs commenced around the middle of the month, which sometimes lasted up till 1330. However, many days with no signals at all. Africans were very consistent, but not too strong. Oceania and South America predominated, but good conditions to South East Asia (PK land) came back early in September, and are very consistent now starting around 1600.

Full moon in October will be on the 6th.

Northern California DX Club Inc., Countries Worked-Postwar .

<u>CALL</u>	<u>CW</u>	<u>PHONE</u>	<u>ZONES</u>	<u>DXCC</u>	<u>WAZ</u>
W6AM	192	108	40	Ph. and CW	X
W6AED		121	37	PH.	
W6AJF					
W6ATO	116	9	38	X	
W6BUY	129		39	X	
W6CIS	174		40	X	X
W6CTL	170		39	X	
W6DUB	129		39	X	
W6DZZ	194		40	X	X
W6EJA	85		37		
W6GIZ	99		38		
W6IDY		142			
W6IKQ		121	36		
W6ITH		97 (CONF)			
W6JK	139	40	40	X	
W6KEK	120		40	X	
W6LDD	143	16	40	X	X
W6LMZ	104		36		
W6MEK	224		40	X	X
W6MHB	132		40	X	X
W6MLY	153		40	X	X
W6MVQ	203		40	X	X
W6MX	216		40	X	X
W6NZ	104		36		
W6OMC	198		40	X	X
W6PB	196		40	X	X
W6PWR	50	132	34		
W6QDE	91		36		
W6QLH					
W6RBQ	192		40	X	X
W6RCC	112		39		
W6RM	201	106	40	X	X
W6RRG	107	69	39		
W6SC	199		40	X	X
W6SQ	72				
W6SR	158		39	X	
W6TI	176		40	X	X
W6TT	208		40	PH. & CW	X
W6UPV		73	31(All on 10 Phone)		
W6UZX	172	112	40	X	X
W6WB	203		40	X	X
W6WP	76				
W6WJX	123		40	X	
W6YI		91	33	PH. Prewar	
W6ZCY	210		40	X	X
W6ZUI	113		39		
W7HXG	112				
G5LI	208		40	X	

000
000

In order to keep our lists up to date and you can't be at the meeting give the info to one of the gang and we will get it up to date.