

JANUARY

19 AND 52

FEBRUARY

DXER

A.R.R.L.  
1952

D  
X

CONTEST

PHONE & C.W.

NORTHERN CALIFORNIA DX

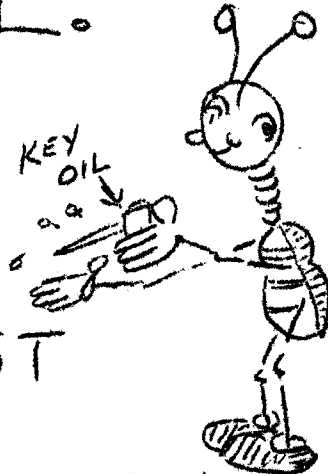
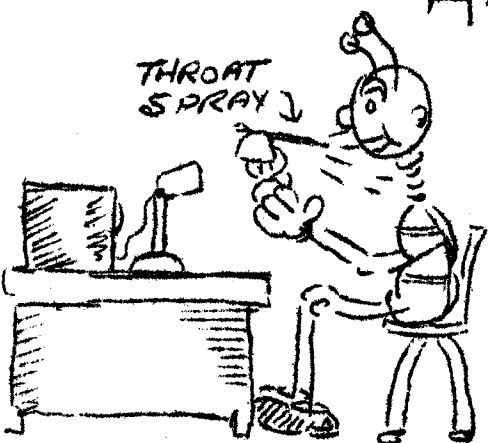
CLUB INC.

= POSTOFFICE BOX 75 =

OAKLAND-CALIFORNIA

THROAT  
SPRAY

KEY  
OIL



NORTHERN CALIFORNIA DX CLUB, INC. POST OFFICE BOX 75, OAKLAND, CALIFORNIA  
 PUBLISHED MONTHLY FOR THE BENEFIT AND INTEREST OF ALL IT'S MEMBERS - - - - -

President - W6SR  
 Vice Pres.- W6MVQ  
 Sec/Tres. - W6KEK  
 Board of Directors  
 W6NIG  
 W6CTL

Founded - 1946

Past Presidents  
 W6PB  
 W6IKQ  
 W6TI  
 W6WB  
 W6OMC  
 W6LDD  
 W6ATO

Permission to reproduce any or all parts of the  
 DX'er is allowed provided full credit is given  
 the DX'er

January and February Issues 1952

Issues 1 & 2 Vol. 5

Greetings Gang: Here we are with our first issue of the DX'er for 1952. We hope that the Northern California DX Club will have another prosperous year and that DX conditions are better than they were in 1951. We have a new Secretary-treasure and two new directors so back them the way you have done for club office in the past.

With the Fresno meeting as a start we have certainly started the new year with a bang. Every year these Fresno DX Conference's get better, which means that we will really have a job to do next year. The Northern California knows how, when it comes to taking home the prizes; W6CTL won it in 1950, W6NZ last year, and W6RRG this time, now if we could only snag that DX cup everything would be Okay, we better do something before the Southern California gang think they have a permanent lease on it.

By the time that you receive this issue, the first week end of the ARRL Phone DX contest will be over, the 2nd weekend will be the week end of Feb. 15th - 17th with the CW contest next month. We will have at least two multioperator stations this year, W6PYH and W6GIZ, and W6NIG with W6CTL and W6KEK helping him. The outlook for ten meters doesn't seem to be much but the lower frequencies seem to be doing ok, especially the way W6MHB is snagging stuff on 80. Let's all get in the contest and no matter how small your score is, send it in, every little bit helps.

The committee of W6PB, W6LDD, and W6KEK are still looking around as far as places to meet are concerned. We will meet at the Coit Hotel but still must guarantee twenty for dinner. Also last meeting the cost of the meal was raised and I thought (everybody welcome to his own opinion) the quality was lower than it has been. Also not everyone likes what is served and there should be some system worked out where we had choice between at least two different entrees.

As you will notice, we have a picture of W6GPB's layout in this issue, and have one of W6VE's for the next issue, but from then on we have nothing in the way of station pictures for future issues, so will you fellows who as yet have not had your station picture in the DX'er, please have one taken and loan us the negative. The write up that Joe gave us with his picture was especially good and we would appreciate it if others would follow his example when they give us the station picture.

Well I guess this about wraps it up for this time. Local news was kind of scarce for this issue and we had to borrow quite a bit of new from the Southern-Calif. and the West Gulf bulletins, so how about a little more stuff for the next DX'er.

The following were handed to us by W6TI:

When the "Flying Enterprise" sank off the coast of England, it had over 7 tons of mail for USA, we wonder how many tons of this was QSL cards and how many hard to get ones.

The next club meeting we be at the Hotel Coit as usual on Feb. 14th. It is now necessary to guarantee a minimum of 20 for dinner so we ask that from now on everyone make an effort, that can, to be present for dinner so the club does not have to make up the difference.

Don't forget your dues as it is now 1952, so check with the secretary and find how you stand. The dues of all charter members is past due so see W6KEK.

---

The Fresno Meeting was it's usual FB affair and we wish to thank the Southern California gang for a swell Time. Due to weather conditions the crowd was smaller than it would have been with normal weather. As usual W6TT AND W6DUB had the most popular room in the hotel, the bartenders at the hotel bar practically had the night off. W6AM did a very FB job as MC at the dinner, W6SR introduced W6PB who presented the "DX Cup" to the Southern California DX Club, it is starting to look like that cup has a Southern Calif. complex. W8IOP, ex W2IOP, gave us the low down on

East Coast DX conditions and the DX stations in that area. W6QD showed us how some of the card fakers do it and had the cards with him to show us, W6SAI showed slides and gave us a FB talk on his trip to Europe. Once more the Northern California gang brought home the loot by W6RRG winning the 4-400A donated by W6QD. After the meeting which ended at midnight the gang either went to the bar or up to take another look at the Electric - Supply Company's supply. At breakfast Sunday morning W6ENV gave a talk on his TVI Proof XMTR illustrated with slides. Following that, the usual round table was held and then the DX quiz which ended in a tie between W6SAI And our ex member ex W6VBY, who now is living in Southern California. Once again thanks to W6AM for the FB job done by him and his committee. Remember fellows, next year it's our turn.

The following info is from Don, W6AM. During the summer, Don and his XYL, W6MA, plan a trip to Sweden to attend the Swedish Midsummer Celebration in June, can't some of you guys talk Don into making a DX Expedition or two while he is over there.

Don worked FF8AC who sends a Happy New Year to the gang. He says he is but 3 miles from Rio de Oro, but Don could not get him to say he would go over there and give us a new country. W6AM heard 9B3AA who says he is in the Balkans, using 10 watts, and to QSL via 9S4AR, he came in at 7:25 a.m. PST DL7AB sez the guys in LZ land. Don reports that FD8AB is on 14021 Kc daily 2:30 - 3:30 pm PST and coming in over VK2, FD8AA 14030 Kc 8 a.m. PST coming in over ZL. FBBS told Don that the FB8ZZ 1950 and 1951 expeditions will all be QSL in April 1952. FB8XX returns to France in 1952 so please wait for QSL cards.

---

From the Southern California DX Bulletin we borrow the following info. W6CUQ is their new editor and his first issue was a very nice job.

It looks like March will be a good month to watch as a VK2 should be sign ZC2 on COCOS Island (Keeling, Str. Set A couple of XEI's are waiting to find out if ARRL and CQ will make the Revilla Gigedo Islands a new country and if so will go there soon, they are about 500 miles off the central Mexican coast.

CN8FB 7 a.m. PST 14065 Kc. daily  
MI3AB 7 a.m. PST 14020 Kc.  
ZD2FFB 2 p.m. PST 14060 Kc.  
SV9RP QSL via WLCUY

---

We are now receiving the DX Bulletin of "The West Gulf DX Club" from W5KUC, HE SENDS OUT the bulletin twice a week and is doing a wonderful job. Where he gets the time to do this and still work DX is more than I can see, it is all I can do to put out a DX'er once every two months. A subscription to the West Gulf bulletin cost's \$ 6.00 a year and besides each subscriber must contribute DX news on a form that is mailed with each issue, this form sheet is divided into 8 columns that are labeled: Date, Station, Freq., Emission, Time, Report, and remarks, what do you fellows think about the idea of trying this in the DX'er?

DX Conditions on 20.

The mornings have been the best for Europe however there have been some early afternoon openings to the Cold countries (LA, SM, OH etc ) as late as 2 p.m.

Towards North Africa, there have been openings around 2 to 3 p.m.

South America in the early to late afternoon so things don't look too bad for the contest on this band.

-----  
Some of the Phone boys are now getting set for the phone portion of the contest. It is too bad that there are not more phone contest men in the club so that competition could be a little better. However, we know the boys on CW (a few at least) will be banging away and trying to help out in the phone scores.

-----  
W6 MHB has been hammering away on 80 CW every night and was happy to contact G2PL and G2HX. Incidentally Peter, G2PL gave MHB a 5-7-9 which is mighty good for 400 watts to a single 813 from the Bay Area.

-----  
Fresno meeting is now past history but again, all the boys that attended had one swell time. The refreshments as furnished by W6TT and W6DUB were again one of the highlites of the meeting. Next year we of the NCDX Club will be the hosts and will try to live up to the fine entertainment that the SC boys put on.

-----  
Next time try the train!!!! We all had a lotta fun travelling that way.

-----  
The twins of 6RRG are doing FB. Already named , Karen and Kevin. The way to RRG's shack is easily determined, just look for the house on Daniels St in Vallejo that has all the white flags flying.

-----  
W6LDD will probably be moving soon to a new QTH which needless to say is on top of a hill. If DX is at all coming thru, Ed should be able to hear it from the new location which will be a welcome relief from the years of famine Ed enjoyed ?? from the old QTH.

W6PB typed out the left half of this page, so please excuse the difference between our typewriters. We wish to thank Dan for this and the very FB cover that he turned out for this issue

-----  
If W6PYH's neighbors are wondering what all the fuss in the evenings has been, it is just W6PYH, W6GIZ, and W6CGG putting up new antennas by candlelight, moonlight, etc. for the DX contest. W6PYH and W6GIZ will be multioperator for the CW contest at Pete's QTH.

-----  
The following stuff is from W5KUC's West Gulf Bulletin:

For those who were lucky enough to snag VQ4FCA, his QTH is Box 5163, Nairobi, Kenya.

The West Gulf club has also written the FCC requesting that the order prohibiting contacts with certain foreign countries be cancelled in as much as it is discrimination against the W ham

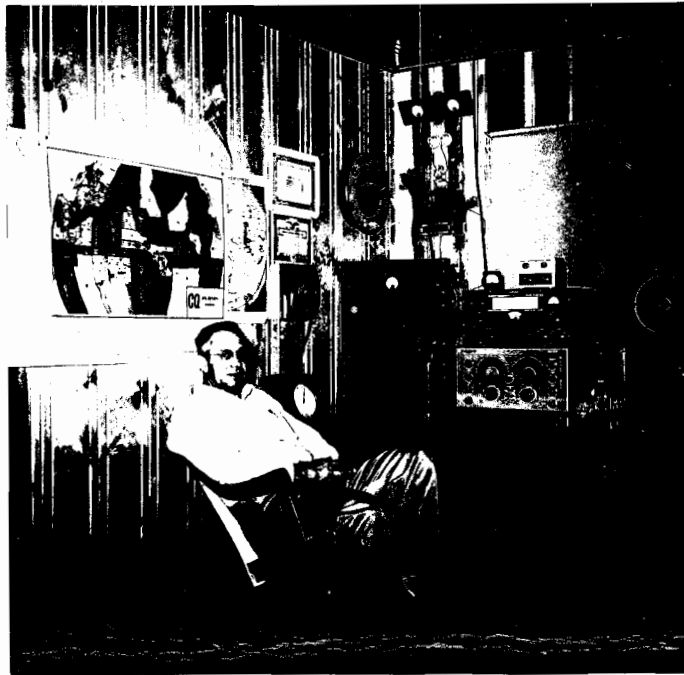
-----  
ZS6DW told W8HRV, that ZS2MI will operate Mondays thru Saturday each week 1700 to 2000 GMT on high phone freq. of 14350 Kc and low phone freq of 14180 Kc. and his cw freq of 14060 Kc. Starting Jan. 27 he will operate every other Sunday through February. He is a commercial operator and must use his commercail transmitter on the ham bands therefore the reason for the above schedule. QSL to either ZS6DW, or ZS6BW and QSLs will only be sent on receipt of your QSL'. MP4BBD (ex W6DQD) Box 613, Awali, Bahrein Island, Persian Gulf.

-----  
Joe; W6GPB was ill with the flu and missed the Fresno meeting. We hope the he has gotten rid of the bug by now and will be at the meeting.

-----  
We notice in the DX column in February "QST" new prefixes are listed for Spain Jordan, Netherlands New Guinea, Isreal Viet Nam, French Morocco, San Marino, Nepal, and Saar. Boy what a mess.

-----  
We notice that QST has finally corrected W6UYX's score from last years DX test. Dick has a new QTH now and we hope he does just as good this year, or if possible better.

\*\*\*\*\*



W6GPB Joe Horvath, 522 - 3rd St., San Rafael, Calif.

This issue we have a FB picture of W6GPB sitting in front of his rig, he don't seem to be doing much when the picture was taken, guess he is just a sittin and wonder when DX has gone. Anyway here is the dope on this FB layout in Joe's own words:

W6GPB First went on the air in 1932 at Windsor, Calif, with a self excited pair of 15 watt 210's in a TPTG circuit, runnin at 15 watts input. The antenna was a 135 foot zepp fed job and the receiver was a two tuber 01-A Det. and 01-A audio. 80 CW and later 40 and 20 were tried. First DX was CE7AA on 14 Mc CW which really got me on the DX hunt but good! In 1934 the company transferred me to Tiburon and after quite a bit of experimenting I finally wound up with a long wire VEE Beam and a baby KW. Looking over the log my mouth waters for such as VS8AA-VQ8AA-VQ8AF-VQ8AS-FB8AD-AE & AF, FT8AG & PZ6ZK. 110 countries were worked by the beginning of the war, that is if I can count BUUP! Won the 8th and 9th Sweepstakes contest in 1937 and 38, also the DX contest for 1938. All the above for the S.F. section. The company again transferred me, this time to San Rafael, the present QTH. Every time the receiver was turned on it was shut off just about as fast, the power line noises were terrific.

However hearing all the FB DX being knocked over was more than any dyed in the wool DXer could stand and consequently GPB went back on the air April 8th 1949, with a MIMS SIGNAL SQUIRTER and a Collins 310 exciter for the Xmtr. Both 10 and 20 fone and CW were used, running a cool 25 watts input. The receiver is a NC183. 114 countries were worked in 14 months time and also my DXCC certificate was received from these same 114 countries. Low power is okay if you have plenty of time, but as my operating time is very limited we gave in to the easy way and now run a full 250 watts input to a 4E27, which is also suppressor modulated. On the floor and still under construction is a full KW rig, maybe someday I can put the finishing touches to it and surprise some of the boys.

We received a postal from our Oregon member, W7HXG. Lee's score for the CQ contest was 5805. He sends his regards to all the gang.

\*\*\*\*\*

Following dope is from the "West Gulf DX Club" bulletin:

MPL4BED Bahrein Is. QSL via R.S.G.B.

By the time this appears EA8AW should be on from Rio de Oro.

NORTHERN CALIFORNIA DX CLUB, INC. ----- POSTWAR COUNTRIES WORKED

CALL	WORKED (CW)	CONFIRMED	WORKED (PHONE)	CONFIRMED	DXCC	WAZ
W6AM	233	229	174	174	X/P	X
W6AED	-	-	123	120	X/P	37
W6AJF		(Honorary Member)				
W6ATO	160	152	47	41	X	X
W6BUY	163	145	-	-	X	X
W6CEM	166	150	-	-	X	X
W6CIS	189	161	-	-	X	X
W6CTL	178	168	-	-	X	40
W6DUB	142	140	-	-	X	X
W6DYP	232	178	-	-	X	X
W6DZZ	225	219	-	-	X	X
W6EJA	106	95	-	-	-	37
W6GIZ	120	98	-	-	-	38
W6GPB	152	140	35	35	X	40
W6IDY	-	-	142	90	-	-
W6IKQ	-	-	155	148	X/P	36
W6ITH	-	-	115	115	X/P	36
W6JK	171	162	-	-	X	X
W6KEK	156	132	-	-	X	40
W6KEV	189	156	-	-	X	X
W6LW	165	133	-	-	X	-
W6LDD	180	162	45	25	X	X
W6LMZ	154	130	-	-	X	37
W6MEK	237	226	-	-	X	X
W6MHB	173	165	-	-	X	X
W6MUF	134	110	*	-	X	40
W6MVQ	227	208	-	-	X	X
W6MX	228	222	-	-	X	X
W6NIG	154	133	131	127	X/P	38
W6NZ	140	126	*	-	X	39
W6OMC	203	199	-	-	X	X
W6PB	216	200	-	-	X	X
W6PYH	150	124	-	-	-	-
W6QDE	145	122	-	-	X	38
W6RBQ	203	191	-	-	X	X
W6RCC	131	112	-	-	X	40
W6RRG	129	108	90	81	X	39
W6SC	209	190	-	-	X	X
W6SR	185	169	-	-	X	X
W6TI	205	195	-	-	X	X
W6TT	226	218	142	133	X/P	X
W6UPV	-	-	76	76	-	31
W6UYX	135	115	132	114	X/P	37
W6UZX	187	171	128	120	X/P	X
W6VE	210	194	-	-	X	X
W6WB	218	188	90	50	X	X
W6WP	76	60	-	-	-	-
W6WJX	140	130	69	60	X	40
W6ZCY	213	199	-	-	X	X
W6ZUI	161	154	-	-	X	39
W7HXG	141	116	39	32	X	39
G5LI	208	190	-	-	X	40

\*\*\*\*\*

Please correct at next meeting

Totals	
DXCC	43 (CW) 8 (Phone)
WAZ	28
Members	52