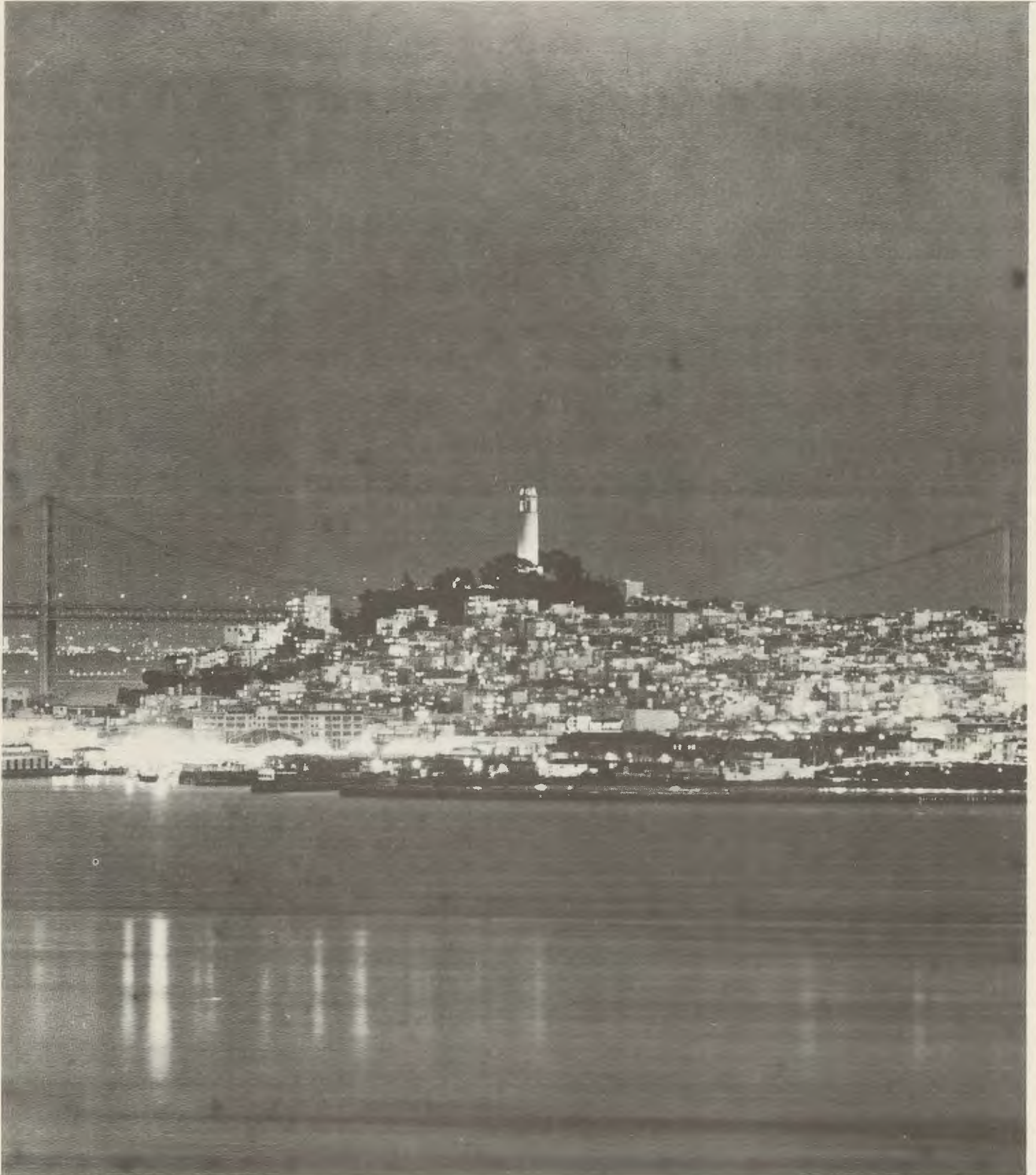


# NCDXC

NORTHERN CALIFORNIA DX CLUB

Feb 76

**THE DX<sub>er</sub>**



\*\*\*\*\*

THE DX'ER

THE NORTHERN CALIFORNIA DX CLUB, INC. P.O. BOX 608, MENLO PARK, CA 94025

Published monthly for the benefit and interest of NCDXC members.

FOUNDED 1946

\*\*\*\*\*

OFFICERS

President Bill Johnson W6MUR
Vice Pres. Orm Meyer K6QX
Secretary Dave Palmer W6PHF
Treasurer E. Howard Hale W6SC
Directors Merle Parten K6DC
Robert Smithwick W6JZU

\*\*\*\*\*

Permission to reproduce any of the contents is hereby granted, provided that credit is given to "THE DX'ER".

\*\*\*\*\*

Club repeater - WR6ACZ

Input frequency 147.96 MHz
Output frequency 147.36 MHz
Suggested SIMPLEX freq. 147.54 MHz

The NCDXC NET meets on the repeater at 08:00 PM Thursdays for the purpose of exchanging DX and other information of interest for the mutual benefit of its members. WA6AHF is net control station.

\*\*\*\*\*

W6TI BULLETINS are sent Sundays at 18:00 GMT or on Monday at 2:00 GMT on a frequency of 14.002 MHz. The W6TI Trustee is Bob Vallio, W6RGG.

\*\*\*\*\*

Please send member report forms by 28th of month to John Brand, K6RXZ.

Deadline for all other contributions is the first day of the month, to :

Adam A. Mentas, VE3DXV/W6
P.O. Box 951,
Mountain View, CA 94042

\*\*\*\*\*

The meeting was held at the Cabana-Hyatt House, Palo Alto, CA.

The meeting was called to order by President Bill Johnson, AC6MUR. Howard, W6SC stated that QSL blank stock was available for \$10 per thousand.

The February meeting will be held at the Cabana-Hyatt House in Palo Alto on Friday February 13, and will feature Tom Gates of the Foothill College Astronomy department speaking on the UFO phenomena. Marin county will be the site of the March meeting with further information in February.

Guests were Wayne Spring, W6IRD with his XYL and the new bride of Howard, W6OL.

Wayne, W6IRD of the Southern California DX Club described the ultimate contest station of Bob Roni, K6RR on the top of a three thousand foot mountain. Considerable competition is promised for future DX contests.

Orm, K6QX stated the price of the Fresno bus will probably be \$17 and that reservations should be made early to avoid disappointment.

Mail nominations for DXer of the year to Merle, K6DC who is compiling the suggestions.

AC6MUR stated that the DX panel would be held at the Belmont city council chamber on the 17th of January. All were invited.

Howard, W6SC, the Treasurer read the club's financial statement, which does appear to be healthy:

Checking account \$872.12
Savings account \$1500.00
Repeater fund \$905.33

Adam, VE3DXV/W6 stated that advertising revenue would significantly improve the financial support of the organ.

A report on SAROC was given by Bob, K6SSJ who stated that the CB problem is exploding in a cancerous manner and will probably engulf us if amateurs do not take action.

Adam, VE3DXV/W6 presented a very interesting slide show on his trip to Budapest, Hungary a few years ago.

(minutes of Jan. meeting cont.)

Charlie, W6ZYC reported that the receiver and transmitter sections of the new solid state repeater were functional and that the interface was being designed. Compensation for the defunct duplexer was being negotiated.

Charlie also demonstrated the digitally controlled Collins model 61S1-A which is the ultimate HF receiver, but is priced rather above what the majority of hams could afford.

New Business - Rubin, WA6AHF objected to the method of choosing the DXer of the year and stated that he thought that the last three recipients of the award should choose the person. K6SSJ moved that the original method of selecting the DXer of the year be retained. WA6AHF seconded the motion. W6JZU suggested that the matter apply only to this year to avoid future problems. K6SSJ withdrew the motion. W6JZU moved to sustain the president's decision. Those present voted, motion carried.

The meeting was adjourned by President Johnson, AC6MUR.

Respectfully submitted,  
David H. Palmer, W6PHF  
Secretary, NCDXC, Inc.

\*\*\*\*\*

ROSTER CHANGES AND ADDITIONS

Addition:

Elliott Pisor, K6ILM  
450 Liberty Str.,  
San Francisco, CA 94114

Corrections:

James F. Wakefield, W6PSQ  
P.O. Box 701,  
Madera, CA 93637

Ken Day, W6YK (formerly W6FOZ)  
Box 611,  
North Fork, CA 93645

\*\*\*\*\*

PLEASE NOTE..... If there has been any changes in your address or home/business telephone numbers since the last roster was issued (June 1975) please make sure that the club Secretary has the current information. We hope to issue a new roster in the near future....

FROM THE PRESIDENT'S CUBBYHOLE

I'm finding the quest for countries for CW DXCC '76 as AC6MUR a lot of fun. Worked 108 in the first month. (It took me four years for the first 100, as I recall, over 20 years ago). You really ought to try it.

I wonder if we should not be developing some club policy on operational use of the repeater? There are many who claim it is a DX repeater with occasional intercom use for short QSOs related to our DX activities. But long QSOs can be heard often during the day (and I'm one who has done it on occasion), making it necessary, for those who simply monitor to hear about something good coming on, to turn down the volume. Maybe we should institute some form of tone keying for either DX announcements or QSOs not of general interest.. In the first case, the audio could be gated on by the tone, and in the second, the audio could be gated off. Or maybe we should just cut out the yakketty-yak? What do you think? Let's hear some discussion on this at the February 13 meeting.

The meeting, by the way, promises to be a fascinating one, with Tom Gates of the Foothill Space Science center talking on UFOs. If you watched the Channel 2 special on UFOs with Rod Serling on Jan 26 you will be intrigued with the idea that these things do exist that don't have rational explanations. Gates has a very good talk on this, given before Rotary Clubs and other organizations. And he is no crackpot either.

So, CU at the Feb. 13 meeting, Cabana, 6:30/7:30 PM.

Bill, W6MUR

\*\*\*\*\*

FRESNO INTERNATIONAL DX CONVENTION

This year's convention will be held at the Hilton Hotel, Fresno, CA on the weekend of May 15-16. Plan now to attend the event. Full convention information will be mailed to all NCDXC members in mid-March. For more information, write to: Southern California DX Club, P.O. Box 73, Altadena, CA 91001

Jay Holladay, W6EJJ, Convention Chrmn.



\*\*\*\*\*

It has been requested that all California stations who worked CR9AK during the December 4-8 1975 DXpedition send in QSL cards. The operators are trying to collect the 200 QSLs plus 20 NCDXC members to qualify the station for the Club's California Award. In W6 land there were 179 different QSOs on CW and 243 on SSB. Please send your card to P.O. Box 717, Oakland, CA 94604. TNX !!!

\*\*\*\*\*

THE CR9AK DXPEDITION by W6ISQ.

The December 4-8, 1975 DXpedition to Macau was definitely a "Gentlemen's DXpedition". That's the way I like it. And that's the way K6AHV, W6MAV and VS6DR liked it too!

We used Fernando's equipment and call. The equipment was the Drake line, driving a Collins 30L1, plus a Curtis keyer. Antennas were a Telrex tribander about 40 feet up and a trap 40/80 inv. Vee hanging from the tower.

Only one operator was needed at a time, so this left time and opportunity for the non-operating ops to go shopping or eat new exotic dishes at various fine Portugese restaurants.

The DXpedition made a total of 3769 QSOs in 71 countries. In the USA there were 511 QSOs on CW and 531 on SSB. That should keep both sides happy!! - In the states, at last. It wasn't quite so even for Japan. There we worked 1481 on SSB and only 648 on CW. Actually, however, the DXpedition was a triumph for CW! When the signals were weak to the

far reaches of the world - which was the case most of the time, SSB never quite made it well enough to run many QSOs. But a switch to CW made the difference. And stations were worked in goodly comparative numbers.

A good case in point - Europe. Only 32 on SSB, but 228 on CW. It was the same experience that Marty had at Mt. Athos, only a couple West Coast QSOs on SSB but a couple of hundred on CW.

Ditto, East Coast, USA. Total W1-4 SSB QSOs was 20! Total W1-4 CW was 104. Conditions were poor; no doubt about that. But the fact that we could not copy SSB but could copy CW ought to be significant.

South America and Africa were toughies for us. Only a total of 18 SA and ten africans were worked all bands.

Again for the record, the Europeans and East Coast USA people have K6AHV to thank for their QSOs. The Old Kingman Reef Chief Op can really ferret out the weak ones. As can W6MAV. Old VS6DR is a real cracker jack op too. The writer was

(The CR9AK DXpedition cont.)

allowed to operate only when JAs were S-9 plus and there was absolutely no way anything further away could possibly break trough.

The DXpedition was sponsored by the Northern California DX Foundation. QSL to W6WX or to P.O. Box 717, Oakland, CA 94604.

W6 AND W7 FIRST STATION QSOs....

80 METERS	SSB	CW
	W6NLZ	K6RM
	W6TSQ	W7KW
	W7KW	W6NLZ
	W6MZ	W6MZ
	K6RM	K6QHC/6
40 METERS	NONE	W6PT
		K6RM
		K6UJS
		W6KJG
20 METERS	W6YO	OH5VT/W6
	WB6EZJ	WA6KZI
	WA7LAG	K6VNX
	W6ONV	W6MUR
	WA6HXR	WA6WEI
15 METERS	W6ARJ	W6CS
	K6OVJ	K6GA
	K6AQ	K6OVJ
		K6AQ
		K6LU
10 METERS	NONE	NONE
	Only JAs	Only JAs

First USA QSO - W5PK, 7 MHz CW

First East Coast - WLDAL, 7 MHz, CW

First West Coast - W6PT, 7 MHz, CW

\*\*\*\*\*

KEEP THE CARDS AND LETTERS COMING FOLKS!

\* Finally got FR7ZL/G. Hope he will QSL better than FR7AM/G, who did not QSL at all. K6LQA

\* VR8B #100 on 80 meters, need only 18 cards to complete 5BDXCC. Still in need for mixed DXCC of Bouvet, So. Sandwich, TN8, Mellila y Ceuta, VS9, YI and 8Z4.

K6MA

\* Happily, after nearly 40 years of hamming, I can report WAZ! That is an average of one zone per year. I'm glad there weren't 80 zones, because I would not have made it. Might have finished a bit earlier, but it took just two months short of five years to get ST2SA's QSL...After one via Buro, one to his QSL manager and two direct. W6OKK. (Congratulations Pat, they are not easy to come by these days! ed.)

\* Maybe I'll be on 75 for the ARRL Phone Test. WB6RIU

\* Thank heavens Bob and Don worked CW from CR9AK; I had the worst case of laryngitis I've ever had during those two weeks. It was so bad I even had to give up the CQ WW CW test. For the first time in three years, all of the equipment stayed together but the operator came apart. VR8B was #299 for me; boy am I glad I saved KH6 until now! K6UJS

\* I am vacationing in Florida and my new call caught up with me. W6YK, ex W6FOZ

\* Still barefoot with Swan 350. New 3 el. 20 M monoband yagi working fine! Just a handful of new countries in 1975. Outstanding QSLs: TT8AC(1972), UJ8SAJ(1974). Still get very few QSLs from our new bureau..! W6YVK

\* Still QSL manager for 9K2DX; he was QSO'd several times by So. Cal. stations in Dec. on long path. My QTH not so hot on long path, but will keep trying as he is a relative of mine. Friday is a bad nite for me, hence can only attend an occasional meeting. When I retire, I hope it will be different! W6LV

\* On that 161 CW worked, am counting from Jan. 1, 1975 only. Have 130 confirmed. Need zone 29 and zone 34 for WAZ, all 20 meter CW. Young Tommy Moyce was on St. Helena, ZD7 yesterday (Jan. 23). Got him!! K6VY

\* Recent goodies here include UI8IZ, 7025 0234Z; 4W9GR, 7002 1528Z; JT0OAO, 3504 1452Z; 9G1LZ, 7010 0157Z and 9J2WR, 7002 1625Z. W6MUR

\* Recent new ones on 80/75 include CR9, VR8, P29, ZK1 and ZK2 for a current total of 113 on the band. Heard, but was too late for EA8CR/9. VE3DXV/W6

MINI-BIOGS... MINI-BIOGS... . . . . by W6EYY  
MINI-BIOGS...

The January issue of the DX'ER indicated that a mini-biog information card was enclosed. Unfortunately the printing of the card did not make the deadline, and the issue was mailed out without it. (The slip-up was entirely my fault. ed.) The elusive card is included with this issue. Now that you have it please don't hold it. Fill it in - let us know all about you. SEND YOUR CARD IN TODAY!

K6UGS, Vern, San Bruno. Employed by P.G. & E. Attended Coll. of San Mateo, City College S.F. and S.F. State. Received AA degree in Police Science and MA degree in Industrial Psych. Aspires to attend law school. First licenced in 1957. Holds advanced amateur and 2nd class commercial phone licenses. Rig is an SB-102. Antenna is a modified Hy-Gain Quad at 50 feet. SSB and CW shares equal time. Operates a TR-22C with 1l el beam on 2 M. DXCC 169 wkd, 129 cfd. Member: ARRL, S.F. Radio Club, Pacific DX Net and Wescars. Holds WAS, WAZ, CP-20 and WAC. Served six years in Air Force as air traffic control officer. Enjoys message and phone patch traffic and experimenting with Oscar type antennas.

WA6AHF, Rubin, San Lorenzo. Quality Control Manager. Attended various schools, earning AA degree. First licensed in 1957. Holds Advanced class license. Operates SSB 99%, CW 1%. Has IC-220 and Motorola 2 meter FM rigs. Currently is Net Control for weekly NCDXC 2 meter meetings. Has various rigs with KW capability. Antennas are TH6DXX, 402BA and a nondescript 80 meter jobby that really works. DXCC 313 wkd, 313 cfd. Has 5BDXCC and needs only 10 on 10 meters to complete 5BWAS. WPX 800. DXpeditioner to San Andres Island (HKØ). Received NCDXC California Award No. 1 for San Andres. Recipient NCDXC DXer-of-the-year Award along with XYL Ferne. QSL manager for many DX stations (Ferne does all the work). Enjoys contests, meeting DXers and assisting foreign DXers in any way possible. Claims to be champion martini drinker, which few will dispute.

W6OL, Howard, San Jose. Retired math professor. Attended Stanford (A.B. and Ph.D.) and the Univ. of Calif. where he received his M.A. degree. (I wonder who he rotes for in the "Big Game") Was first on the air after WWI with war surplus stationary spark gap; then became legal in 1923 with a 5 watt CW rig. Received limited commnc l license in 1923 and operated KCHS, Central High School, Omaha, Nebr. Holds extra class amateur license and operates CW 100%. Has Gonset Communicator IV with frequency modulator for 2 meter FM. Rig: conventional commercial equipment. Antenna is CL-33. DXCC 287 cfd. Member of OOTC #560.

\*\*\*\*\*

## 5 KW PEP INPUT

WITH THIS NEW BALUN



on all bands 160 to 10 meters. Runs cool as a cucumber at its CCS rating of 2 KW (Continuous output power through the balun at matched load). 4" dia. Wt. 24 oz. \$32.50 PPD.

### AND FOR FULL LEGAL POWER

the time tested Model 1K balun is still available. Rated at 1 KW CCS (3 KW PEP input). 2 1/4" dia. Wt. 9 oz. \$16.95 PPD.

### ONLY PALOMAR BALUNS HAVE ALL THESE FEATURES

- Toroidal core for highest efficiency.
- Teflon insulated wire to prevent arc-over. OK for tuned feeders.
- Stainless steel eyebolts take antenna tension. Won't rust, won't pull apart.
- Epoxy filled case. Absolutely waterproof.
- Lightning protection built-in.
- Wideband 1.7 to 30 MHz.
- Hang-up hook provided.
- Now available in either 1:1 or 4:1 ratio. 1:1 ratio matches 50 or 75 ohm coax to 50 or 75 ohm balanced load (dipoles and inverted Vees). 4:1 ratio matches 50 or 75 ohm coax to 200 to 300 ohm balanced load.

Free descriptive brochure on request. Order direct.

Model 2K \$32.50      Model 1K \$16.95  
Center insulator without balun \$7.95  
Postpaid U.S. & Canada.  
Specify ratio 1:1 or 4:1  
California residents add 6% tax.  
Send check or money order to:

## PALOMAR ENGINEERS

BOX 455, ESCONDIDO, CA 92025  
Phone: (714) 747-3343

I am on the lookout for old issues of the Northern California DX Club Bulletins. I would like to gather together a complete set if that is at all possible. They will be placed in the Archives of the club. It may also be interesting to reprint items or articles from them from time to time. Perhaps you know someone who has a complete set and would be willing to donate it to the club's Archives. If not, perhaps we could gather together issues from several of our older members in order to compile a complete set. Since we are the oldest DX Club in the world it would be interesting to try to collect as much of the available information as possible. Your assistance will be greatly appreciated.

We are also hoping to publish an NCDX Club booklet with pictures of all members, both past and present. Any old pictures of early members would also be appreciated. They will be returned to those who wish to have them back, otherwise they will be placed in the Archives.

If you know an experienced printer, with reasonable rates who may be able to print the booklet, we would like that information as well. We plan to publish the booklet in time for Fresno next year (1977), which will be the 30th anniversary of the NCDXC.

Please contact me via 2 meters or by telephone or mail as soon as you can. Many thanks.

Bob Thompson, K6SSJ  
14703 Eastview Dr., Los Gatos, CA 95030  
Tel.: (408) 356-1282 or at work (415) 494-7516

\*\*\*\*\*

SOME ITEMS OF INTEREST from Frank Anzalone, W1WY

A note from Brother Ed, HV3SJ suggests that if you are visiting Rome and plan to visit HV3SJ, you should give him a call on the landline beforehand and arrange a meeting, rather than show up unannounced. You stand a much better chance of seeing him if you do. Phone: 65 69 841.

The Radio Club Venezolano has advised that recent contacts with YV8AL/Ø, Aves Island are not valid. The YV8AL license expired in June 1960 and no authorization for this operation was given by the Ministry of Communications. The last authorized Aves Island operation was by YVØAA on January 10-15, 1973.

The CQ WPX SSB Contest in March promises to be a good one this year. Plan to be on in it.

(more on this next month. ed.)

\*\*\*\*\*

# M-TRON

2811 TELEGRAPH AVE.,  
OAKLAND, CA 94609.  
763-6262

"SERVING THE BAY AREA AND  
THE WORLD"

ATLAS

DENTRON

DRAKE

ICOM

LARSEN

TEN-TEC

HY-GAIN

CUSHCRAFT

NEWTRONICS

KLM

CURTIS

K.E. ELECTRONICS

NYE-VIKING

CORNELL-DUBLIER

VIBROPLEX

ARRL BOOKS

CALLBOOKS

OTHERS

HOURS:

Mon.- Fri. 9 AM to 5 PM  
Saturday 9 AM to 4 PM

NCDXC MEMBERS' STANDINGS

Compiled by K6RXZ

CALL	DXCC HONOR ROLL			DXCC INCL. DEL.			5 BAND DXCC					WAZ		WPX	
	MIX	PH.	CW	MIX	PH.	CW	10	15	20	40	80	MIX	PH.	MIX	PH.
WA6AHF					313		100	100	100	100	100		40		800
K6AHV	316			333			100	100	100	100	100	40			
K6AN	317			351								40			
K6AO	305			317	247		45	41	106	29	53	40			
W6BH				308	302		20	201	271	155	1				
W6BJB					268		68	100	100	35	4		40		
WB6CAB				303	303								40		
K6CQF	310			324			100	100	100	100	100	40			
WA6CXX				269			42	125	205	54	24	40			
W6DOD	315			323	245		110	120	132	101	64	40	40		
K6DC	320			345	200							40			
WB6EXW				121											
W6EYY				274			125	118	172	29	17	40			550
W6GPB	317			347								40	40		
WA6HRS				295			100	100	100	76	32	40			753
W6ISQ				333	311		157	189	219	122	110	40	40		847
W6JHN					146										
W6KG	318			342	251		118	159	182	122	92	40	40		731
W6KOE					310								40		
K6LQA	300			306								40			
W6LQC		293		299			65	100	100	13	47		40		500
K6LU				337											
W6LV				222											
K6MA	314			331	300	60	110	100	100	102	100	40	40		
W6MUR				330								40			
W6MZ				277								40			
W6NKR				289								40			
K6OJO				296	294							40	40		
W6OKK							74	100	100	95	57	40			
W6OWL				200											
K6OZL				308	100		5	100	100	100	96	40			
W6RGG	317			327	311							40	40	x	x
WB6RIU				257	257		84	119	227	36	70	39	39		
K6RK				223	223		55	92	100	48	87				
K6RU				300	250		100	100	100	100	97	40	38		
DJ6RX				301			100	100	100	100	100	40			
W6TSQ				321			148	100	100	216	183	40			
K6TXR					311								40		
K6TZX				222	84	42						40			533
K6UGS				129								40			
WB6UJO					294								40		
K6UJS				296								40			
WB6UOM		284			288								40		
W6VQD				290			25	130	252	51	54	40			
K6VY						161						38			
K6WD				262								40			
PA9WRR				149	145	149	12	18	121	38	55	38	38		
WA6WXP					304							40			
W6YK	319			346											
W6YKS				166	53	86	26	48	116	35	25	39			



CALL	DXCC HONOR ROLL			DXCC INCL. DEL.			5 BAND DXCC					WAZ		WPX	
	MIX	PH.	CW	MIX	PH.	CW	10	15	20	40	80	MIX	PH.	MIX	PH.
W6YVK					222		102	177	138	46	27		38		553
WB6ZHD				196	101							39	39		
W6ZM	322	321					126	137	315	41	99	40	40		
WB6ZUC				249		100						40			
W6ZYC				279	275								40		

\*\*\*\*\*

GEAR FOR SALE

One each Canadian Marconi Model DT-76, 120 Watt (out) mobile transceiver. Four channels are crystaled up out of six available. This one is all solid state, except the final, which is an instant heating tube. The receiver draws about 100 mA, the transmitter about 20 A. It is trunk mounted, with control head up front. Asking \$150.00. K6SSJ

Have the following items for sale:  
 32S3 w/AC Supp. and 312B4 Console  
 75S3B, no CW filter  
 3-1000Z Home Brew Linear  
 Johnson KW Matchbox w/SWR meter  
 Tristao CZ-471 Tower w/20' mast  
 KLM 5 el 20 meter beam  
 402BA w/BN26 Balun, brand new  
 Cushcraft 4 el 15 meter beam  
 CDE HAM-II rotator

Prefer package deal on tower and antennas; will sell equipment separately. Best offer takes it. Returning to College, QRL Tuesday and Thursday nights.  
 Ron, K6OZL,  
 1730 Easy Str.,  
 Hanford, CA 93230  
 (209) 584-8987

\*\*\*\*\*

DID YOU KNOW THAT..... by W6EYY

RF field strength decreases as the square of the distance from the transmitting antenna. Do you have a TVI problem with your Southside neighbor 20 feet away? Then move your antenna to 40 feet away. Twice the distance would result in a field strength reduction factor of 4. (2<sup>2</sup>) Sounds good!  
 However, one problem still exists, the neighbor on the Northside now has TVI. (Ed. note: how about doubling the height of your tower for a similar effect?!)

RESULTS, CQ WW DX CONTEST, CW SECTION

As of presstime, the following scores were in. There may be more, hope you all got your log in to CQ Magazine by January 15.

K6CQF	708,295
W6MUR	196,730
W6OKK	112,632
W6YKS	78,360
K6AO	46,102
K6WD	33,620
K6DC	32,396
WB6EXW	30,597
VE3DXV/W6	22,360 (80 M)

\*\*\*\*\*

CONTEST CALENDAR

Feb 7-8 ARRL DX Phone Contest  
 Feb 21-22 ARRL DX CW Contest  
 Mar 6-7 ARRL DX Phone Contest  
 Mar 20-21 ARRL DX CW Contest  
 Mar 27-28 CQ WW WPX SSB Contest

\*\*\*\*\*