

# West Coast DX Bulletin



27-77

July 5, 1977

TOKELAUS Early last May Marty Maessen, 5W1AT, operated as ZM7AT from the Tokalaus and promised to return in July. This last weekend Michael Metzger, K2GMV/6, was due back in San Francisco from his FOØPJM operation.

On June 13th K2GMV will head out to Western Samoa to join with 5W1AT for a trip to ZM7-Tokalaus and about ten days of operation there.

The operation is aimed at opening on or about June 15th. Information on the frequencies is not available at this time but both 5W1AT and K2GMV were using twenty and fifteen SSB on their previous efforts, sometimes high in the band.

Next week there should be more information on this effort. The FOØPJM operation ran up a large total of QSOs and was frequently reported. The ZM7-operation should produce a large number of QSOs. Back in October 1974 Jim Henderson made it to the island group and operated until December of that year grinding out QSOs at a great rate. However, with a couple of years of low activity, any country becomes rare and this coming operation should find a lot of business.

Those thirsting for c.w. should also be preparing to rejoice. C.W. activity is also indicated....like 14025kc for openers. With the flux up, some periods of High Normal forecast for mid-July, it may help the deserving forget the July humidity.

FRANZ JOSEF UK1PAA is a more or less permanent station on Franz Josef, occasionally reported and usually on c.w. There has been no really intense activity from the arctic outpost since 1972 when UR2AR and UR2DW swept up most of the demand for this one with their strong signal. The group there in the north end of the Barents Sea has 187 islands, and except for some weather observers and polar scientists, is uninhabited.

UW3HY, V.M. Begunov, is headed out for this ski resort area this month and will take over as Chief Operator there. There are indicators that there will be a bit more amateur activity than in the pass and you might sift through the UK1s you hear looking for that UK1PAA.

BANGLADESH JA1ELY, Tosi, one of the JA-operators who attended the Fresno International this year, has confirmed with K7ABV that S21AB is being worked in Japan.

Crystal controlled, the station is found at:

14150kc  
14195kc  
14250kc

The station has been reported as active after 1100Z.



SUNSPOT LOUIE With loud cries of: "The Flux is Up!! The Flux is Up!!", all the deserving DXers have been running up and down the bands welcoming back the good days of DXing. And with the higher frequencies showing more and more life, all the weary but happier DXers can say is: "More!"

Look at #839.....the biggest thing around in years. Last week it was doing some minor flaring....six were noted on June 26th alone. These affected conditions, WWV was getting the flux reports well above 100. On June 26th the flux figure was 117 and was expected to edge a bit higher towards the middle of last week, on Friday it was still above 100.

#836 was with us last week and turned the corner at the right limb before you started the holiday last Saturday. #837 was also with us last week, on the 24th it was showing 21 spots and 300/millionths coverage. It also flared on June 27th. On the date of this chart it was showing 16 spots and 130/millionths of coverage.

But it was #839 that was dominating the chart, it with its big area. This one showed on June 24th, having 4 spots and 350/millions of area. The following day it had 840/millionths with 35 spots and it was covering an even bigger area on the day of this chart...

Though we were not deluged with ten meter reports this week, there are a handful and many are reporting that the higher frequencies are showing more and more with good openings.

With every DXer ready to admit that he has hardly used any of his quota of good days, we check the action on the south bank of the Potomac where N4XX is there at each dawn peering to the east and welcoming the new day and the high flux. And Ted says, peering down the long hot days of July, that it will be something like you want, maybe more of the other but often a bit of the same. But, nevertheless, all of it will come and you might as well prepare for it will be.....

July 5th	High Normal
6th	High Normal
7th	High Normal
8th	High Normal
9th	High Normal
10th	High Normal
11th	High Normal
12th	High Normal

July 13th	High Normal, but
	with periods of Low N.
14th	High Normal...but
15th	Low Normal
16th	High Normal....but
17th	Low Normal...

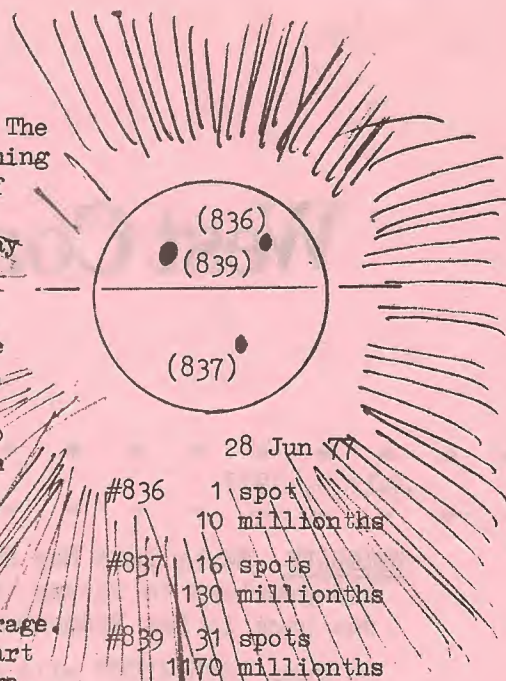
There it is. And keep in mind that all of these are relative....relative to the existing conditions, possibly relative to what you are hoping for but with everything heading up, enjoy the long summer days of endless flux...

And Ev in the southwestern corner, who a week or so was hailing the return of the nineties, is now almost speechless, only able to say: "Wow!!" as he lists the high flux and the low K. K6EC says it was....

	Solar Flux	Ap Index
June 20th	86	8
21st	89	6
22nd	96	8
23rd	96	9

	Solar Flux	Ap Index
June 24th	104!	8
25th	110!!	6
26th	117!!!	6

There it is. Go scan the bands. Your DX gravy boat may be approaching....





5 July 1977

MORE SHORT NOTES.... All the skin has come back on the fingers but we are now using rubber gloves when we get near the chemicals. We are also figuring to get most of the bulletin into the mails on Saturday this time trying to beat the holiday slow-down. Vivid yet are the memories of rushing down to the local Post Office on Christmas and New Years to find that they were not making any dispatches on that day. Now the only thing that worries us is the talk of raising 1st class postage to 16¢. Congress is not especially happy over the way things are going and may cut out the independent corporation or severely restrict its scope of activity. While the 16¢ rate is proposed, it may be a bit in coming as Congress may also take away the rate-making authority from the Postal Service.

Sporadic E has been reported in recent weeks. N4XX notes that often this may mask some good F<sub>2</sub> skip. You hear the loud short-skip and figure the bands are loused. Those loud short-skip and F<sub>2</sub> ricochetting off the tops of the Sporadic E clouds will cause some of the weak-hearted to give up. WB6BJS notes working short skip from below San Francisco to the San Diego area and long skip to Japan at 0630Z recently. Trust nothing! There is DX everywhere and Herb worked JAs until 1:30a.m. local time here.

At this point as we wend our way down into the last part of the year, we must admit that there really is not much earth-shaking DX news this week. But from what we hear and what we know, the slow times will not last forever. There will be some excitement in a couple of areas before the year is out. As some found out in the last year or so, a DXpedition at the bottom of the cycle can be frustrating. But with the Flux up!!....you can look for a lot more action. And some BIG Stuff! Patience for now, however....

## ***DX 10 years back***

July 5, 1967

Don Miller was preparing to embark on the 'Edward Bear' for the run to Rodriguez. Actually he did not get away

until August but a lot of DXers were spending their vacations in the shack in the hope...or fear...that Don would suddenly show with a brand new one. FR7ZL/T was expected shortly. DL7FT was expected in a week from EA6.

Madison was offering a SWAN 500 for \$495.00...a 75A1 for \$100.00 and an NCX-3 for \$199.00. Also 4-1000As for \$60.00. W6CUF was the new president of the Northern California DX Club. K6KA was heading home after a trip plagued with rig problems.

\*\*\*\*\*  
WEST COAST DX BULLETIN Second class entry and postage paid at San Rafael, Calif.

Published every week by the Marin County DX Group at 77 Coleman Drive, San Rafael, California 94901.

\$18.00 per year by first class mail in the U.S./VE areas. \$14.00 per year by second class mail in the U.S.

\$20.00 per year for airmail service to Mexico and all the far DX lands down the edge of the night and beyond tomorrow. All of them!

\*\*\*\*\*



5 July 1977

ARRL The new ARRL Repeater Directory is out and available and it looks good. The handy 5 1/2 x 8 1/2 size should fit in or under any rig or pocket and the number of repeaters listed are always interesting to note and to study.

You can get one of these Repeater Directories from ARRL, they weigh just under four ounces bare so if you allow for five ounces of postage you will be home free. If you are in a hurry you would be best to send a sase with 57¢ postage for first-class mailing. The envelope should be large enough.

Your director also has a large supply of the directories. If he is within easy reach, put the arm on him for one. They are a good item to have. And one of ARRLs free member ship services... James Morris, KH6HQQ, edited the booklet. With a bit of advertising included, it runs around 88 pages.

St PIERRE/MIQUELON WB8NBT and K8CJQ operated there from June 18th to 25th and made 1142 SSB QSOs and 530 c.w. type. They operated from 2030Z on June 18th to 1118Z on June 25th, their experience being that conditions were poor on the 18th to 20th but good on the 23rd and 24th.

The calls used were FPØDE and this one QSLs to WB8NBT, and FPØCJ, this one goes to K8CJQ.

WB8NBT.....224 Sanford Court, Zeeland, Mich 49464  
K8CJQ 3066 Grand View Dr. Allegan, Mich 49010

For both this was their first look at a DXpedition....they enjoyed it so much that they are already talking of trying another.

VQ9R Back last fall G3LQF was in the Seychelles visiting VQ9R and while there operated for three weeks.

Roger found the QSL situation for VQ9R needing a bit of help and he brought back to Reading all of Carl's logs. With a full supply of QSL cards, he is now ready to handle any demand for the following periods.

VQ9R	11 Jun 1971	to	December 31, 1976
VQ9R/D	29 Oct 1972	to	November 2, 1972
VQ9R/F	21 Oct 1973	to	October 28, 1973
S79R	1 Jan 1977	to	date...

If you thirst for a card in one of these periods, send yours...SASE/SAE/IRC to:

Roger Brown G3LQP  
11, Fircroft Close  
Tilehurst, Reading RG3 6LJ  
Berks. ENGLAND

Roger is also currently handling cards for C5AR and C5AU.

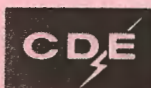
SAN DOMINO From August 3rd to 17th IL7DMK will be heard from San Domino Island in the Adriatic. This may not be a new country but it should attract the WPX and IOTA types. The operation will be headed by Massimo (Max) Di Marco out of Milano, his home call I2DMK.

Max advises that day lists (schedules) are available and should be sent to his Milano QTH. QSL to the same place with sase/sae-IRC. Look for IL7DMK at

0800-0900Z	7050kc/phone
0900-1030	14190kc/phone
1300-1530	14025kc/cw
1930-0000	14025kc/cw..looking for dx stations
0000-0200	7010kc/cw

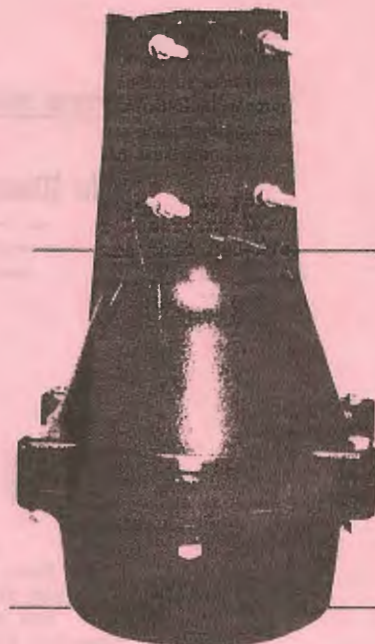


# meet the Fantastic TAIL TWISTER<sup>T.M.</sup>



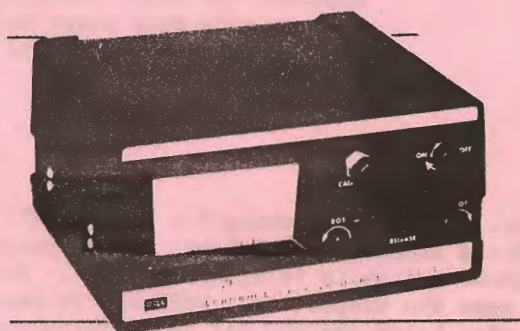
## ROTATOR SPECIFICATIONS

Installation .....	Inside tower
Diameter .....	9-5/16"
Mounting .....	5/16" Bolts (6 supplied)
Height .....	14-1/16"
Mast Size .....	Up to 2" O.D.
Rotator Weight .....	18-3/4"
Wind Load Rating .....	Antennas up to 28 Ft. <sup>2</sup>
Bearings .....	138 Ball bearings (3 races)



**HEAVY DUTY ROTATOR.** . . that starts with the world famous HAM II design, then adds a totally new thick cast aluminum bell housing with wider, stronger reinforcement webs to easily support the largest antenna. The upper mast support is predrilled to allow bolt-through installation to prevent mast slippage. A new three ring ball-bearing assembly provides side thrust control as well as increased vertical load carrying capacity.

The new high-torque motor, with a metal pinion gear to guard against stripping, incorporates automatic coast-down pre-brake action. Drive is transmitted through three stainless steel spur gears with final drive into a new machined steel ring gear. A new thicker, wider wedge brake assembly securely holds the antenna at rest. Stainless steel 5/16" hardware completes this heavy duty rotator package.



## CONTROL BOX SPECIFICATIONS

Input Voltage .....	110-120 VAC
Size .....	8-3/8"W x 8-1/4"D x 4-3/8"H
Line Cord .....	3 Wire (Grounded)
Control Cable Requirements .....	Belden 8448 up to 120' (or equivalent)

**NEW CONTROL BOX DESIGN.** . . that will please the professional. . . full regulated indication of antenna direction, snap action control of clockwise and counterclockwise rotation, snap action control of brake, separate on/off switch for instant antenna location as well as front panel control of calibration. New L.E.D. indicators signal rotation and brake operation. And, housed in a black satin anodized case, it looks as good as it works.

The TAIL TWISTER<sup>TM</sup> is designed for in-tower mounting to assure a secure base for its load capabilities. The tower selected should be checked to verify its load rating is adequate for the installation intended. Though the TAIL TWISTER can be mounted with four 5/16" bolts, it is recommended all six be used to provide installation strength to match the rating of the rotor. Like all Cornell-Dubilier rotors, the TAIL TWISTER comes backed by over 30 years of experience and proven performance in supplying the communicator with quality products he can depend on.

The suggested list price for the Tail Twister is \$350.00. Pick up your phone and call Don, W5UW, and get the special MADISON price for Deserving DXers.. Use the DX Hot Line.....(716) 658 8021. The key words are that Red-Eyed sent you....

**MADISON ELECTRONICS SUPPLY**

1508 McKINNEY  
HOUSTON, TEXAS 77002



5 July 1977

LET'S HEAR IT ONCE MORE FOR JACK ANDERSON!

## The Washington Post

1150 15TH STREET, N.W.  
WASHINGTON, D.C. 20071  
(202) 223-6000

BENJAMIN C. BRADLEE  
EXECUTIVE EDITOR  
(202) 223-7911

June 6, 1977

Dear Mr. Day:

You have the best organized lobby I have met for a long time. You -- or someone -- has organized a letter writing campaign that should be the envy of all lobbyists.

I can assure you I am not continuing any misunderstanding. I am not going to detract from your cause.

Sincerely,

*Benjamin C. Bradlee*

Mr. R. Day, Secretary  
The United Radio Amateur Club  
129 Mirabeau Ave.  
San Pedro, Calif.  
90732

Last week we figured we had run the Jack Anderson and his column of April 4th as far as it would go. We were finished. But this week we just have to slip in another letter from one who is rapidly becoming one of our favorite letter writers, Benjamin C. Bradlee, Executive Editor of the Washington POST.

The POST is the newspaper that sells the Anderson column to some seven hundred other newspapers.

We like his letter...and think you will also. This one was written to one of those Erudite Sixers.....the kind that write letters.

Ray Day, WB6JFD, of the Palos Verdes country wrote to Bradlee some weeks back. This should give some indication of what the impacts of the protests on the April 4th column were. For one thing, you can be sure that for some time to come they are going to be a bit cautious how they approach the angry amateurs. As someone once said years back: "You won't be kicking me around anymore!"

SHORTLY NOTED WOPY has filed a petition....RM-2907....asking for 1X1 and 2X1 calls for amateurs who have held an Amateur Extra license for at least twenty years and who hold both a first class radio telephone and radio telegraph license. Such calls would be WOPW or WAOA. There are some who suspect that WOPY has an Amateur Extra license since at least 1957, and also holds the FCC 1st class telephone and 1st class telegraph license.

W3DOS, the Department of State Radio Club, was right out in the open for Field Day. The station set up was a couple of hundred feet from the Lincoln Memorial. The site was good.....everything went without a hitch.

P29CC continues to be heard most days after 0600Z and sometimes to 1200Z or later. Look for him on the Pacific DX Net frequency....14265kc....or thereabouts. Also heard frequently is P29DV and in the same neighborhood or a bit down the band.

Many continuing to comment favorably on the Kingman operation. Some say that twenty was the hard band to get through, that it was easier on the others. The card table....or portions of it....that was used by the 1974 operations...was reported as still there on top of the reef. This was part of the props for one of the most intriguing DXpeditions photos ever....K6AHV/W6RJ there at the operating table, his back to the camera.....and such cleavage!! One JA DX publication ran it on their front cover.....in full color. Probably the first DX centerfold material!



## REPORTS FROM RED EYED LOUIE

Let us go then, you and I,  
When the evening is spread out against the sky.....

## LOW BAND LOUIE

KH6IJ 1997/0815/Jun 18w  
KP6BD 1995/0800/Jun 18w

VK2AFG 3502/1345/Jun 20w ZL1BQD 3808/0950/Jun 24e  
VK0AC 3529/1730/Jun 28w ZS2HI 3778/0335/Jun 22e  
VR4DN 3808/0900/Jun 24e ZS6DW 3778/0330/Jun 22e  
ZL4LR/A 3529/1235/Jun 28w

CM2VG 7027/0310/Jun 25w F5LQ 7005/0430/Jun 28w HI8MAJ 7010/0300/Jun 25w VK2AFG 7002/1325/Jun 20w  
DK4IZ 7028/0230/Jun 19m F6ARC 7011/0445/Jun 24w HK0EX 7010/0415/Jun 24w VK0AC 7030/0605/Jun 19m  
DL7RK 7036/0255/Jun 19m FP0DE 7026/0555/Jun 23w OK3KFF 7028/0205/Jun 19m XE1EH 7024/0405/Jun 25w  
DM2BF 7028/0200/Jun 19m G3AZY 7019/0520/Jun 22w ON5MF 7002/0445/Jun 25w YU4EBL 7028/0215/Jun 19m  
EA1BC 7014/0540/Jun 25w HB9EP 7006/0450/Jun 27w PY2GZY 7016/0530/Jun 23w YV3AGT 7006/0230/Jun 25w  
F3NB 7013/0430/Jun 22w HI7RFM 7013/0300/Jun 25w TG9ML 7251/0215/Jun 20m ZS5A 7005/0730/Jun 24w

## AFRICA SSB

O6ACD 14263/2210/Jun 20e K4SQT/SU 14216/0400/ 16e 3D6BE 14201/1405/Jun 25w# 5H3JR 14286/1915/Jun 20w  
EA8OZ 14227/0245/Jun 24w TJ1BB 14208/0710/Jun 26m 5N2NAS 21390/1705/Jun 22e 6W8LF 14210/0045/Jun 25e  
EL2CY 14220/2110/Jun 22e XT2AE 14244/2225/Jun 21e 5N2KO 14205/2100/Jun 23e 7X2KL 14204/2210/Jun 21m  
SU1MA 14243/0355/Jun 25m ZS6LP 14216/1125/Jun 25m# 5Z4AA 14221/2015/Jun 19m 7X2DG 14282/2215/Jun 21m  
TU2GA 21380/1800/Jun 22e ZS6IR 14216/1120/Jun 26m# 5Z4TV 14221/2015/Jun 19m 9L1SE 14214/2210/Jun 21m  
TU2GA 14245/2145/Jun 23w 3B8DW 14286/0335/Jun 25m 5Z4JE 14262/0420/Jun 25m

## AFRICA CW

EA8NU 14010/1940/Jun 24e ZS6ME 14033/1400/Jun 22w#  
EL2EV 14020/2100/Jun 15w ZS6IW 14022/0645/Jun 19w  
OH9TH/SU 14036/2300 22w 5N2LA 14028/2015/Jun 16e  
ZD8EW 21068/1620/Jun 18e 6W8AAD 14037/1915/Jun 24e

## ASIA SSB

A9KCC 14221/2100/Jun 24m HM0LR 14212/1420/Jun 26m UF6FE 14215/0350/Jun 22m VU2DK 14220/0605/Jun 20w  
AP5HQ 14240/0140/Jun 25m JY25HH 14208/0040/Jun 24m UK9AAN 14212/1550/Jun 23w 4X4BL 14243/0005/Jun 23e  
BV2B 14218/1200/Wed JY25ES 14267/2255/Jun 22m VS6GG 14225/1550/Jun 23w 4X4JS 14219/0355/Jun 22e  
EP2TY 14237/0240/Jun 21m JY25YA 14267/2255/Jun 22m VS6HJ 14235/1150/Jun 21w 9M2FH 14310/1205/Jun 21w  
EP2SV 14217/0350/Jun 27m JY25YJ 14223/2115/Jun 24m VU2KV 14215/1515/Jun 19m  
EP2NC 14220/0205/Jun 24m UD6DM 14227/2210/Jun 20e VU2XX 14203/1525/Jun 21m

## ASIA CW

EP2SV 14027/0405/Jun 24m UF6CX 14007/0035/Jun 21e VS6BB 14037/1245/Jun 24m 4Z4GD 14004/0150/Jun 24w  
HL9KK 14020/1355/Jun 24w UF6FN 14037/0305/Jun 24e VS6GP 14020/1240/Jun 23m 9V1RD 14016/1450/Jun 24w  
UD6DKW 14033/0315/Jun 27m UW0LI 14018/1235/Jun 22e VS6CH 14008/1530/Jun 26w  
UD6DHX 14037/2020/Jun 22e UK9ADY 14021/0430/Jun 21w VU2KMK 14019/1515/Jun 27w

## EUROPE SSB

CT1SX 21275/1815/Jun 23w HB9BFQ 21300/2130/Jun 23w ON4UN 14209/1515/Jun 21e UK1UAA 14205/0315/Jun 25m  
CT1XY 14213/2205/Jun 20e IK0ZX 14203/0420/Jun 25m ON5GQ 14222/2120/Jun 23w UK2GCF 14213/0415/Jun 25m  
CT2BK 14212/0230/Jun 24w IK8AA 14216/1945/Jun 21e ON4KH 14205/1950/Jun 21e UP2PAC 14219/0345/Jun 25m  
CT6FSJ 14204/2200/Jun 25m I2LHF 21278/1830/Jun 23w ON6FN 21292/2235/Jun 23w UQ2GCN 14288/0000/Jun 24m  
DL7QK 14260/2250/Jun 23m JW2CF 14217/0100/Jun 22m ON7FF 14249/0630/Jun 25m UO5OAK 14207/0355/Jun 27e  
EA3SA 14225/1820/Jun 21w LZ2SC 14227/0330/Jun 25m OZ1JU 14276/2140/Jun 21e YO3AC 14217/2130/Jun 21e  
EA5AX 14205/2345/Jun 24w OH3SR 14200/1645/Jun 18e OZ1RQ 14211/0625/Jun 25m YO3AC 21300/2155/Jun 23w  
EA5ACA 21340/2200/Jun 22m OH8OS 14203/1615/Jun 23w PA0ALO 14221/0320/Jun 25m YO3ZA 14233/2140/Jun 21e  
EA5SJ 21290/0050/Jun 25m OH2BH 14215/1825/Jun 20e PA0KHS 21290/0130/Jun 25m YU1BCD 21280/2350/Jun 24m  
ET1CN 14205/0445/Jun 25w OH4RF 21278/1830/Jun 23w SV1DH 14203/0425/Jun 25m YU4WY 14206/2130/Jun 22e  
EI0CL 14219/0005/Jun 24m OK3TOA 14224/0245/Jun 25m SV1MB 14215/2045/Jun 24e 3A2MB 14241/2215/Jun 21m  
GD4KGC 14208/0040/Jun 25m OK2BKR 14209/0530/Jun 25m SV1IO 14207/2210/Jun 25m 9H1FS 14220/2145/Jun 21m  
GM5APC 14220/1700/Jun 15m OK1KZ 14212/2225/Jun 20e SP8YA 14246/1945/Jun 21e 9H1SS 14216/2105/Jun 22e  
HB9OU 14202/0330/Jun 24w OK1AKW 21300/2135/Jun 25w UB5WE 14207/2230/Jun 18m

## EUROPE CW

CT1QN 21034/2330/Jun 26w HA3GA 14022/0510/Jun 21w OY1R 14042/2325/Jun 24e UK2GKW 14058/0310/Jun 25w  
CT2AV 14038/1600/Jun 24e HA8KEE 14005/2210/Jun 22m PA0RE 14004/0500/Jun 22e UO5DN 14062/0300/Jun 24e  
DM3PQO 14009/0425/Jun 25w LZ2JF 14006/0410/Jun 21w TF3BS 14029/1525/Jun 21e UO5OBD 14029/2145/Jun 18e  
EA2IA 14020/2220/Jun 22w LZ2KGB 14006/0005/Jun 26m TF3AW 14010/2335/Jun 22w UO5GR 14017/0430/Jun 22w  
EA2OP 14005/2345/Jun 23m LZ2AW 14030/0355/Jun 22w SP8HZZ 14016/0420/Jun 22w UP2PCN 14032/2325/Jun 22e  
EA7FT 14013/2340/Jun 23m LZ1GO 14057/1640/Jun 18e UA2FCD 14039/0430/Jun 25w UP2PCU 14011/2030/Jun 25m  
FC6CYS 14078/0430/Jun 25e OK1AGS 14025/2325/Jun 22e UA6BH 14007/1630/Jun 18e YO7NK 14003/2250/Jun 23m  
F0CVF/FC 14007/1645 20e OK1FF 14028/0416/Jun 21w UC2LL 14006/0415/Jun 22w Y08CF 14030/0435/Jun 21w  
GD4BEG 14022/2230/Jun 26w OK2BMF 14009/2330/Jun 23m UC2WAS 14033/1145/Jun 22e 4U1ITU 14030/0000/Often  
GM5APC 14028/1350/Jun 24w OZ1EE 14006/2350/Jun 25m UC2OQ 14021/0450/Jun 22w 9H1EL 14021/2030/Jun 23m  
HA1VI 14018/2110/Jun 25m OE5RI 14018/0515/Jun 21w UC2LO 14072/0430/Jun 25w



5 July 1977

MORE RED EYED LOUIE

ELSEWHERE SSB

CO2HZ 14205/0305/Jun 23w	HI8AFC 14260/0525/Jun 24m	VK6KW 21276/0615/Jun 25e	YC1BLO 21300/0630/Jun 22w
CO2FRC 14202/0230/Jun 18w	HK0BKC 14211/1515/Jun 19m	VK7HL 21335/0225/Jun 23m	ZK1CS 21310/0320/Jun 22w
CO5HT 14211/1150/Jun 26m	HK0CLS 14203/0405/Jun 23e	VK8AC 14233/0730/Jun 25w	ZK1BA 14258/0310/Jun 23w
BU6EG 14214/1420/Jun 26m	KG6MJ 14220/1130/Jun 26m	VK9ZM 21296/0210/Jun 25m	ZL2NY 21292/0150/Jun 19e
DU1REX 14204/1355/Jun 24e	KG4OO 14204/0350/Jun 22m	VK9RH 21278/0030/Jun 21m	3D2ER 14215/0610/Jun 22m
DU6RH 14320/1210/Jun 21w	KG6SS 14209/1145/Jun 24e	VP2APG 14204/1130/Jun 27w	3D2DM 14235/0330/Jun 23e
W7UUC/DU2 14285/1230 21w	KG6RT 14234/0435/Jun 17m	VP2MVP 14205/1130/Jun 27m	5W1AX 14221/0315/Jun 18m
K0WIC/DU2 14222/1120 25m	KG6JFU 14242/1210/Jun 27e	VP2SAB 14223/1245/Jun 27e	5W1BD 21340/0300/Jun 24m
FK8CP 14205/0625/Jun 25m	KJ6BZ 14204/0920/Jun 22w	VR1X 14215/1200/Jun 27e	6Y5RL 21297/1955/Jun 18m
FK8KAA 14205/0550/Jun 22m	W6OKJ/KS6 14307/0630 23e	VR3AK 21260/0250/Jun 26m	6Y5DA 21325/2110/Jun 20w
FO8DV 14215/0745/Jun 24w	KX6BU 14201/0910/Jun 22w	VR3AK 14225/0645/Jun 23m	8R1W 14205/0200/Jun 21m
FO0BG 14203/0700/Jun 25w	OX5AP 14232/1330/Jun 24m	VR4DH 14241/1225/Often	9M6MU 14320/1200/Jun 21w
FO0PJM 21365/2050/Jun 22m	P29CD 14236/0710/Jun 21w	VR4DX 21306/0240/Jun 18m	9M8HG 14240/1410/Jun 25w
FO0PJM 14202/2320/Jun 15m	P29DV 14242/1155/Jun 27e	VR6TC 21350/0050/Tuesday	9Y4OK 21282/1645/Jun 18e
FP0DE 14201/0100/Jun 23e	P29CC 14265/1150/Often	VS5MM 14222/0930/Jun 22w	9Y4CR 14207/0245/Jun 25m
FP0CJ 14216/1940/Jun 21e	P29EJ 14224/1055/Jun 25e	XF3B 14205/0450/Jun 23w	
HH2MC 14220/0435/Jun 25w	P29MM 14220/1100/Jun 25m	YB0CJ 14320/1210/Jun 21w	
HI8XRG 21304/2235/Jun 15m	VE2AGS/TG9 14196/1420 26m	YB7AAU 14203/1405/Jun 26m	

ELSEWHERE CW

DU1FN 14060/1005/Jun 27e	KG6SS 14035/1230/Jun 23m	PJ7VL 14026/0125/Jun 24w	YB0ACT 14029/1450/Jun 22w
WA6YOU/DU2 14035/1150 24m	KG6JAR 14032/1155/Jun 24m	JA8US/PZ 14006/0325 23e	YN1FMQ 21050/2335/Jun 26w
FM0CCO 21021/2155/Jun 20e	KG6VFO 14065/1030/Jun 25e	VK6WT 14022/1015/Jun 26e	ZL1NG 21050/0045/Jun 21e
FO8EX 14001/0505/Jun 22w	KG6RT 14064/1035/Jun 24e	VO1EJ 14008/1215/Jun 25w	ZP5AO 14036/0245/Jun 22w
FO0PJM 14037/1135/Jun 22e	KG6JFK 14030/1015/Jun 27e	VP2GLE 14009/0020/Jun 22w	ZP5EC 14023/0210/Jun 24w
FP0CJ 14013/1445/Jun 23e	OX3VD 14023/0210/Jun 24w	VP9HY 14026/1335/Jun 21e	8P6AU 14053/2330/Jun 22w
FP0DE 14036/1045/Jun 25e	P29EJ 14060/0850/Jun 25w	YB7AAU 14026/1225/Jun 24m	8R1J 14031/1125/Jun 25e

TEN METERS CW

EA2HB 28044/2220/Jun 26e	IL4DVT 28040/2205/Jun 26e	PY2FFA 28020/1905/Jun 26e
DK8AX 28018/1915/Jun 26e	OX3RA 28021/2115/Jun 26e	WA1RFM/VP9 28064/0035 27e
DK8GD 28052/1935/Jun 26e	PA0DC 28035/1950/Jun 26e	9H1CH 28024/2030/Jun 23e
G3FBX 28027/2050/Jun 26e	PA0UGB 28036/2000/Jun 26e	

(e = eastern states m = middle states w = western reaches, e\*c. all times in gmt # = long path)  
(??? = Slim....not heard from lately.....but he will return...)

SOME SHORT NOTES FROM SHORT DXERS On that AP5HQ, after we sent up the rocket we got many saying that direct QSLing works and some fast turn-arounds have been experienced. If you sent it airmail both ways and you have not heard within a month, it might be advisable to try again. Definitely, QSLs do come through.

W7BUN got the KA1IWO cards in his hands last week and is working like an northwest beaver chewing down the stack of QSLs. Jerry figures to have everything clean in a couple of weeks. Sase and IRCs go first, Anything left over will eventually go to the bureaus. They probably should be showing about this time. FR7ZL/T cards continue to show. We need a handle for VR4EC....a handle that will produce a QSL, that is. Those stations in the Sinai signing /SU usually are all going to the same address: Sinai Field Mission, Box 10, FPO New York 09527. Like K4SQT/SU for example.

The San Diego DX Club has been discussing the proposed new start for DXCC. Initially the group was against it but decided that any decisive action would be put off for a couple of months while they mulled all the factors. The opinion was pretty well evenly divided and it probably will be brought up again before long. Other clubs are starting to give attention to this proposal.

Spratly has been in the news recently. Viet Nam is fortifying the Spratly island of Pugad...and shooting at anything that gets close. Not too far away the Philippines are fortifying Parola Island as well as building up its air and naval bases on the westernmost Phillipine Island of Palawan. The Formosa Chinese have a garrison on Ligaw. Mainland China claims the whole group. Oil exploration is going on in this area of the South China Sea with the Philippines doing intensive searching in the Reed Bank area. They want to build a jet strip on Parola.

As long as we are working on the good DX news.....and all the interesting possibilities...it might be noted that there was a report in some Paris newspapers that Russia is using a large iceberg north of Canada's Queen Elizabeth Island and west of Greenland as a floating spy base. Russia says it is using the base for weather and oceanic research. Canada is keeping surveillance on the base....and it is reported that the U.S. also has these icy outposts.

TG9ML says he still does not have a supply of QSL cards. But you can send yours to him at Box 132, Guatemala City. ZL1EKE, Robby, who was heard out of Vila as YJ8AN for a long time, is still unpacking the gear and getting organized at the new QTH at Kawerau in New Zealand. He is putting up a new tower and should be on the air soon.

Keith and Susan Baker, the OM/YL team which has been a large factor in the publication of the ISWL "MONITOR" were planning to relinquish their duties at the start of last month.



5 Jul 1977

# CALENDAR

TOKELAUS	ZM7 by K2GMV/6 and 5W1AT from July 15th
FRANZ JOSEF	UW3HY new operator at UK1PAA. More activity indicated
MARCUS	Mid-August. HL/KA group
U6Øs	Should be back this Thursday, July 7th...from 0700Z
KERMEDEC	October still the target area for the ZL group
CURACAO	PJ9MM from this Wednesday...to July 14th
IARU RADIO SPORT	This weekend.....July 9/10th
SEANET TEST	CW.....also this weekend. July 9/10th
ROANOKE ARRL MEET	In Norfolk....this weekend. Good DX program
COLOMBIAN TEST	July 16/17th
SEANET CONVENTION	HS1WR welcoming all the DXers to Bangkok...Nov 19/20th
VENEZUELAN CW TEST	July 30/31st

MORE SHORT NOTES Recent word out of Washington was that the White House was planning to eliminate the office of Telecommunications Policy, a White House agency which has at time attempted to edge out the FCC as the authority for communications policy.

The Office of Telecommunications Policy, with 59 employees plus a few more 'borrowed'. Some congressional opposition was voice to the plan. The OTP in the past was often labeled as representing commercial interests and viewpoints. One of their proposals was relative to the 220mhz band being opened to CB types.

Referring back to the Flux figures in the sunspot report, the last time the flux touched 100 was in August 1975 and that was the time of the big flares on the sun. Some are still talking about that outburst. VK9ZM went QRT from Willis last week. W1NG is searching for a KL7....object: SCHEDULE. Ken needs Alaska on ten meters to finish off a 5-Band WAS. Some weeks back we advertised for QSLs for some Nevada contacts by F6BFH. He needed them for the Bicentennial Award. Both of his Nevada contacts have come through with cards. Alain.....QSL Manager for FM7AV/HH2V/7X5AB/7X5AH/FB8YE/FG7XT/FPØMB/TI2FV/YN1FV....is happily expressing his appreciation to the Nevada amateurs.

## **ham radio outlet**

CALIFORNIA'S BIG OUTLETS FOR THE LEADING NAMES IN AMATEUR RADIO GEAR

YAESU KENWOOD DRAKE ICOM COLLINS ATLAS CURTIS HUSTLER MOSLEY  
KLM TRIEX SWAN HY-GAIN CDE CUSHCRAFT EVERYTHING at HAM RADIO

## **SPECIALS**

HAM II ROTORS	\$129.00 delivered!
DRAKE C-LINE (Latest)	Big Discounts!
TRIEX TOWERS	Unbeatable Prices!
KLM BIG STICKS	Big Savings!
QUALITY RG8-U CABLE	26¢ per foot!

CALL Bob Ferrero at the Burlingame Store for the Special Tower/Antenna deal!

BURLINGAME	999 Howard Avenue 94010	VAN NUYS	13754 Victory Blvd 91401
	(415) 342 5757		(213) 988 2212
	Bob Ferrero W6RJ/K6AHV		Jim Rafferty WA9UCE/K6AAR
ANAHEIM!!	2620 West La Palma 92801		
	(714) 761 3033		



ARRL The League has filed a 60-page document in response to the FCC proposal to discontinue the issuance of secondary licenses, club, military recreation and RACES, etc. This was Docket 21135.

If you would like a copy and are interested in the League's position on this matter, send an addressed envelope...9x12"...with 46¢ postage and they will rush you a copy by first-class mail. Send your request to: "Docket 21135 Response."

The ARRL Board of Directors will be meeting in July. Now is the time to write your Director on any league matter that you might wish to comment on. You might also write the DXAC on any DX action you might wish....or oppose. One thing for sure there will be growing interest on the proposed new start....wipe the slate clean....for DXCC and the CW DXCC award. Should it be pure CW?

TNX to W1DA, W1JR, W1MV, W1NG, K2BT, W2FP, W2GHV, W2PSU, W3CDL, WA3DMH, W4BV, W4HU, N4NW, W4QDP, W3RX, WB4SIJ, W4TYE, W4UF, N4XX, K4IIF, W5AK, N5EA, K5HW0, W5JW, K5OVC, K5RO, ADXA, K5TSQ, N6BB, WA6BJS, N6CL, K6EC, W6JD, W6KPC, K6LAE, W6MI, WA6TLA, W6TSQ, K6UFT, W6VD, K6VY, W6ZH, K6XT, K7ABV, W7BCT, W7BUN, W7ISY, W7LR, N7MW, WA7OBH, K7UR, WA7UVO, WB8EUN, K8IA, WB8NOU, WA9UEK, W9BA, W9SFU, KH6BZFF, KVL4AM, G3LQF, I2DMK.

WEST COAST DX BULLETIN Published every week by the Marin County DX Group. We were busy watching the flux escalate on the chart last week when we spotted one of the local QRPers beating his way up the hill. "Had to rush right up here," he gasped after the climb and waving a sheaf of papers in one hand, "I was afraid that I might miss this edition." We were instant anticipation as we waited for the good DX news. It was not long in coming. "We operated the club station in the All-Asia Test," the QRPer explained, "and I have all the logs here. Rushed them right up so you could have them for Red Eyed Louie. There sure is a lot of DX here. We made 955 QSOs in the All-Asia, about fifteen or so were outside of Japan. We have all the times and frequencies listed, they cover five bands, and everyone felt you'd want it for this week's bulletin." Son of a Gun! There was the happy QRPer with that beatific smile on his face and we wondering what to do with something like 940 reports of JA activity. "Do you really think JAs are real DX?" we finally managed to ask and the smile was gone, replaced by instant injury and pain. "What do you mean? JAs not real DX! Why they are 6000 miles from California! And if that isn't DX.....Dee for distance, X for exceptional.....I would like to know what is!" And there we were were, stuck! For DX is a moveable feast and often relative to the time and need. And while we grope for a definitive definition of what is DX, a definition that will mean all things to all DXers, we will fill in the long days with a full year of second-class mail bringing you semi-rare DX for \$14.00 in the U.S. \$18.00 will fling it at you by first-class mail in the U.S/VE areas. \$20.00 will fly it down the long-path to Mexico and all the far DX lands where there certainly is someone today working his first JA and asking: "You are my first Japanese station.....how do I QSL quickly?"

////////////////////////////////////

West Coast DX Bulletin  
77 Coleman Drive  
San Rafael, Calif. 94901

**first  
class**